

PAX6 Rabbit mAb (AR1520)

Key Features

Host Species:	Rabbit
Reactivity:	Human, Mouse
Applications:	WB, IHC, IF, ELISA
Isotype:	IgG, Kappa
MW:	47kD (Calculated) 47kD (Observed)

Recommended Dilution Ratios

IHC:	1:200-1000
WB:	1:2000-10000
IF:	1:200-1000
ELISA:	1:5000-20000

Storage

-15°C to -25°C/1 year (Do not lower than -25°C)

Basic Information

Clonality	Monoclonal
-----------	------------

Immunogen Information

Specificity	Endogenous
-------------	------------

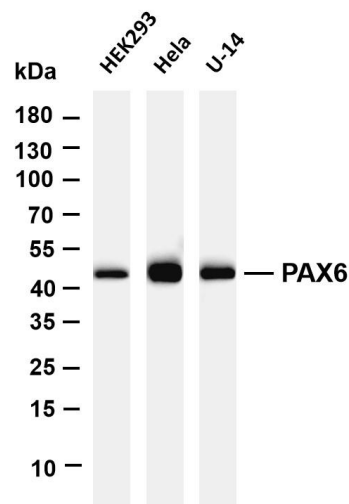
Target Information

Gene name	PAX6 AN2
Protein Name	PAX6

Organism	Gene ID	UniProt ID
Human	5080	P26367
Mouse	18508	P63015
Rat	25509	P63016

Cellular Localization	Nucleus
Tissue specificity	[Isoform 1]: Expressed in lymphoblasts; [Isoform 5a]: Weakly expressed in lymphoblasts.

Validation Data



Various whole cell lysates were separated by 4-20% SDS-PAGE, and the membrane was blotted with anti-PAX6 antibody. The HRP-conjugated Goat anti-Rabbit IgG(H + L) antibody was used to detect the antibody.

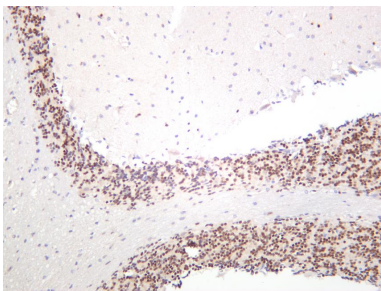
Lane 1: HEK293

Lane 2: HeLa

Lane 3: U-14

Predicted band size: 47kDa

Observed band size: 47kDa



Mouse brain was stained with anti-PAX6 rabbit antibody

For Research Use Only