

Histone H3 (Di Methyl Lys79)

Rabbit mAb (AR1869)

Key Features

Host Species:	Rabbit
Reactivity:	Human, Mouse, Rat
Applications:	WB, IHC, IF, ELISA
Isotype:	IgG, Kappa
MW:	15kDa (Calculated) 17kDa (Observed)

Recommended Dilution Ratios

IHC:	1:500-2000
WB:	1:2000-10000
IF:	1:200-1000
ELISA:	1:5000-20000

Storage

-15°C to -25°C/1 year (Do not lower than -25°C)

Basic Information

Clonality	Monoclonal
-----------	------------

Immunogen Information

Specificity	Histone H3 (Di Methyl Lys79) Antibody detects endogenous levels of Tau protein only when di-methylated at Lys79. The name of modified sites may be influenced by many factors, such as species (the modified site was not originally found in human samples) and the change of protein sequence (the previous protein sequence is incomplete, and the protein sequence may be prolonged with the development of protein sequencing technology). When naming, we will use the "numbers" in historical reference to keep the sites consistent with the reports. The antibody binds to the following modification sequence (lowercase letters are modification sites):DFkTD
-------------	--------------------------------------------------------------------------------------------------------------------------------------------------------------------------------------------------------------------------------------------------------------------------------------------------------------------------------------------------------------------------------------------------------------------------------------------------------------------------------------------------------------------------------------------------------------------------------------------------------------------------------------------------------------------------

Target Information

Gene name	HIST1H3A/HIST1H3B/HIST1H3C/HIST1H3D/HIST1H3E/HIST1H3F/ HIST1H3G/HIST1H3H/HIST1H3I/HIST1H3J/HIST2H3A/HIST2H3C/
-----------	------------------------------------------------------------------------------------------------------------------

HIST2H3D/H3F3A/H3F3B

Protein Name

Histone H3.1/Histone H3.2/Histone H3.3

Organism	Gene ID	UniProt ID
Human	8350; 8351; 8352;	P68431; Q71DI3; P84243
	8353; 8354; 8355;	
	8356; 8357; 8358;	
	8968	
Mouse	319152; 15077;	P68433
	15078	
Rat	291159; 100361558	Q6LED0; P84245

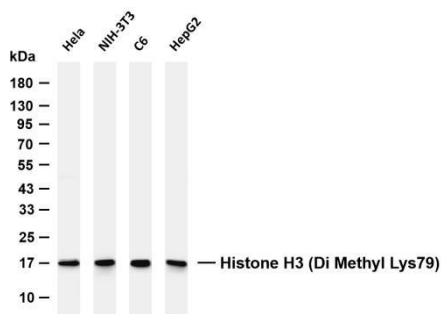
Cellular Localization

Nucleus. Chromosome.

Tissue specificity

Blood, Epithelium, Kidney, Lung, Ovary, Spleen, Uterus

Validation Data



Various whole cell lysates were separated by 4-20% SDS-PAGE, and the membrane was blotted with anti-Histone H3 (Di Methyl Lys79) antibody. The HRP-conjugated Goat anti-Rabbit IgG (H + L) antibody was used to detect the antibody.

Lane 1: HeLa

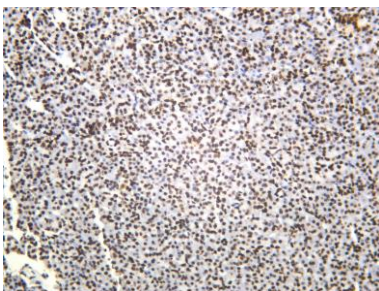
Lane 2: NIH-3T3

Lane 3: C6

Lane 4: HepG2

Predicted band size: 15kDa

Observed band size: 17kDa



Human pancreas was stained with anti-Histone H3 (Di Methyl Lys79) rabbit antibody.

For Research Use Only