

Rpb1 (Phospho Ser5) Rabbit mAb (AR1863)

Key Features

Host Species:	Rabbit
Reactivity:	Human,Mouse,Rat
Applications:	WB,IHC,IF,IP,ELISA
Isotype:	IgG,Kappa
MW:	217kDa (Calculated) 217kDa (Observed)

Recommended Dilution Ratios

IHC:	1:200-1000
WB:	1:500-2000
IF:	1:200-1000
ELISA:	1:5000-20000
IP:	1:50-200

Storage

-15°C to -25°C/1 year (Do not lower than -25°C)

Basic Information

Clonality	Monoclonal
-----------	------------

Immunogen Information

Specificity	Rpb1 (Phospho Ser5) Monoclonal Antibody detects endogenous levels of Rpb1 protein only when phosphorylated at Ser5. The name of modified sites may be influenced by many factors, such as species (the modified site was not originally found in human samples) and the change of protein sequence (the previous protein sequence is incomplete, and the protein sequence may be prolonged with the development of protein sequencing technology). When naming, we will use the "numbers" in historical reference to keep the sites consistent with the reports. The antibody binds to the following modification sequence (lowercase letters are modification sites): GGgPP
-------------	--

Target Information

Gene name	POLR2A POLR2
Protein Name	Rpb1 CTD (Ser5)

Organism	Gene ID	UniProt ID
Human	5430	P24928
Mouse	20020	P08775

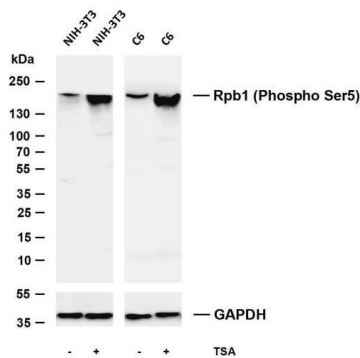
Nucleus. Cytoplasm. Chromosome. Hypophosphorylated form is mainly found in the cytoplasm, while the hyperphosphorylated and active form is nuclear (PubMed:26566685). Co-localizes with kinase SRPK2 and helicase DDX23 at chromatin loci where unscheduled Rloops form (PubMed:28076779).

Cellular Localization

Tissue specificity

Fetal pancreas, Testis

Validation Data



Various whole cell lysates were separated by 4-8% SDS-PAGE, and the membrane was blotted with anti-Rpb1 (Phospho Ser5) antibody. The HRP-conjugated Goat anti-Rabbit IgG (H + L) antibody was used to detect the antibody.

Lane 1: NIH-3T3

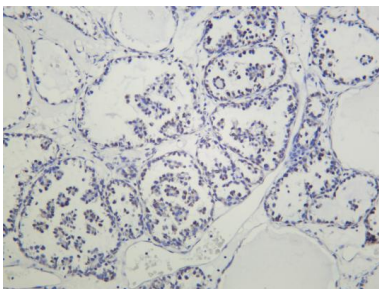
Lane 2: NIH-3T3 was treated with TSA(400nM) for 18 hours

Lane 3: C6

Lane 4: C6 was treated with TSA(500ng/ml) for 4 hours

Predicted band size: 217kDa

Observed band size: 217kDa



Human ovarian carcinoma was stained with anti-Rpb1 (Phospho Ser5) Rabbit antibody.

For Research Use Only