

## eIF2 $\alpha$ (Phospho Ser51) Rabbit mAb (AR1862)

### Key Features

Host Species:	Rabbit
Reactivity:	Human, Mouse, Rat
Applications:	WB, IHC, IF, ELISA
Isotype:	IgG, Kappa
MW:	36kDa (Calculated) 36kDa (Observed)

### Recommended Dilution Ratios

IHC:	1:100-1000
WB:	1:2000-10000
IF:	1:200-1000
ELISA:	1:5000-20000

### Storage

-15°C to -25°C/1 year (Do not lower than -25°C)

### Basic Information

Clonality	Monoclonal
-----------	------------

### Immunogen Information

Specificity	eIF2 $\alpha$ (Phospho Ser51) Monoclonal Antibody detects endogenous levels of eIF2 $\alpha$ protein only when phosphorylated at S51. The name of modified sites may be influenced by many factors, such as species (the modified site was not originally found in human samples) and the change of protein sequence (the previous protein sequence is incomplete, and the protein sequence may be prolonged with the development of protein sequencing technology). When naming, we will use the "numbers" in historical reference to keep the sites consistent with the reports. The antibody binds to the following modification sequence (lowercase letters are modification sites): ELsRR
-------------	--

### Target Information

Gene name	EIF2S1
Protein Name	Eukaryotic translation initiation factor 2 subunit 1

Organism	Gene ID	UniProt ID
Human	1965	P05198
Mouse	13665	Q6ZWX6
Rat	54318	P68101

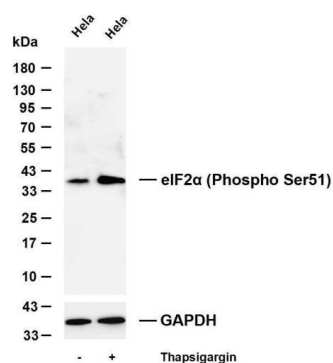
Cellular Localization

Cytoplasm, Stress granule. Colocalizes with NANOS3 in the stress granules.

Tissue specificity

B cells, Brain, Fibroblast, Placenta

## Validation Data



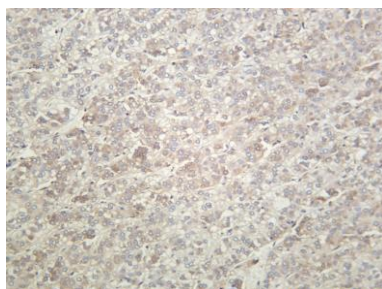
Various whole cell lysates were separated by 4-20% SDS-PAGE, and the membrane was blotted with anti-eIF2  $\alpha$  (Phospho Ser51) antibody. The HRP-conjugated Goat anti-Rabbit IgG (H + L) antibody was used to detect the antibody.

Lane 1: HeLa

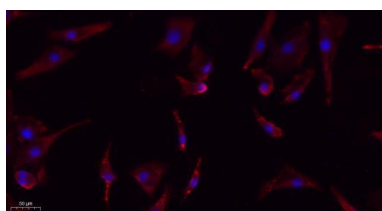
Lane 2: HeLa was treated with Thapsigargin(300nM) for 30 minutes

Predicted band size: 36kDa

Observed band size: 36kDa



Human hepatocellular carcinoma was stained with anti-eIF2  $\alpha$  (PhosphoSer51) rabbit antibody.



Immunofluorescence analysis of A549.

1. Primary Antibody(red) was diluted at 1:200(4°C overnight).
2. Goat Anti Rabbit IgG (H&L) - Alexa Fluor 594 Secondary antibody was diluted at 1:1000(room temperature, 50min).
3. DAPI(blue) 10min.

For Research Use Only