

Tubulin α (Acetyl Lys40) Rabbit mAb (AR1858)

Key Features

Host Species:	Rabbit
Reactivity:	Human, Mouse, Rat
Applications:	WB, IHC, IF, IP, ELISA
Isotype:	IgG, Kappa
MW:	50kDa (Calculated) 55kDa (Observed)

Recommended Dilution Ratios

WB:	1:2000-10000
IHC:	1:200-1000
IF:	1:200-1000
IP:	1:50-200
ELISA:	1:5000-20000

Storage

-15°C to -25°C/1 year (Do not lower than -25°C)

Basic Information

Clonality	Monoclonal
-----------	------------

Immunogen Information

Specificity	Tubulin α (Acetyl Lys40) Monoclonal Antibody detects endogenous levels of Tubulin α protein only when acetylated at Lys40. The name of modified sites may be influenced by many factors, such as species (the modified site was not originally found in human samples) and the change of protein sequence (the previous protein sequence is incomplete, and the protein sequence may be prolonged with the development of protein sequencing technology). When naming, we will use the "numbers" in historical reference to keep the sites consistent with the reports. The antibody binds to the following modification sequence (lowercase letters are modification sites): SDkTI
-------------	---

Target Information

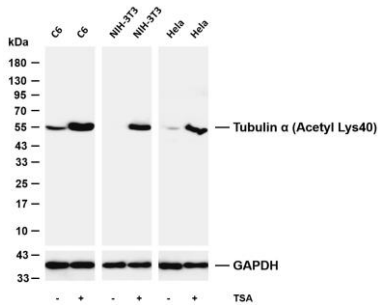
Protein Name	Tubulin alpha
--------------	---------------

Organism	Gene ID	UniProt ID
Human	7277	P68366

Cellular Localization

Cytoplasm

Validation Data



Various whole cell lysates were separated by 4-20% SDS-PAGE, and the membrane was blotted with anti-Tubulin α (Acetyl Lys40) antibody. The HRP-conjugated Goat anti-Rabbit IgG (H + L) antibody was used to detect the antibody.

Lane 1: C6

Lane 2: C6 was treated with TSA (500ng/mL) for 4 hours

Lane 3: NIH-3T3

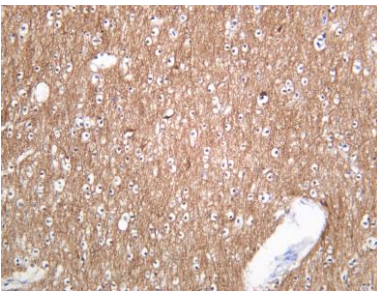
Lane 4: NIH-3T3 was treated with TSA (400nM) for 18 hours

Lane 5: HeLa

Lane 6: HeLa was treated with TSA (400nM) for 18 hours

Predicted band size: 50kDa

Observed band size: 55kDa



Human brain was stained with anti-Tubulin α (Acetyl Lys40) Rabbit antibody.

For Research Use Only