

p53 (Phospho Ser15) Rabbit mAb (AR1857)

Key Features

Host Species:	Rabbit
Reactivity:	Human, Mouse, Rat
Applications:	WB, IHC, IF, IP, ELISA
Isotype:	IgG, Kappa
MW:	44kD (Calculated) 55kD (Observed)

Recommended Dilution Ratios

WB:	1:2000-10000
IHC:	1:200-1000
IF:	1:200-1000
IP:	1:50-200
ELISA	1:5000-20000

Storage

-15°C to -25°C/1 year (Do not lower than -25°C)

Basic Information

Clonality	Monoclonal
-----------	------------

Immunogen Information

Specificity	p53 (Phospho Ser15) Antibody detects endogenous levels of p53 protein only when phosphorylated at S15. The name of modified sites may be influenced by many factors, such as species (the modified site was not originally found in human samples) and the change of protein sequence (the previous protein sequence is incomplete, and the protein sequence may be prolonged with the development of protein sequencing technology). When naming, we will use the "numbers" in historical reference to keep the sites consistent with the reports. The antibody binds to the following modification sequence (lowercase letters are modification sites): PLsQE
-------------	---

Target Information

Gene name	TP53 P53
-----------	----------

Protein Name

Antigen NY-CO-13; BCC7; Cellular tumor antigen p53; FLJ92943; LFS1; Mutant tumor protein 53; p53; p53 tumor suppressor; P53_HUMAN; Phosphoprotein p53; Tp53; Transformation related protein 53; TRP53; tumor antigen p55; Tumor protein 53; Tumor protein p53; Tumor suppressor p53

Organism	Gene ID	UniProt ID
Human	7157	P04637
Mouse	22059	P02340
Rat	24842	P10361

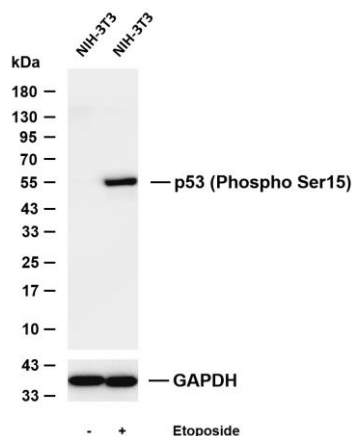
Cellular Localization

Nuclear

Ubiquitous. Isoforms are expressed in a wide range of normal tissues but in a tissue-dependent manner. Isoform 2 is expressed in most normal tissues but is not detected in brain, lung, prostate, muscle, fetal brain, spinal cord and fetal liver. Isoform 3 is expressed in most normal tissues but is not detected in lung, spleen, testis, fetal brain, spinal cord and fetal liver. Isoform 7 is expressed in most normal tissues but is not detected in prostate, uterus, skeletal muscle and breast. Isoform 8 is detected only in colon, bone marrow, testis, fetal brain and intestine. Isoform 9 is expressed in most normal tissues but is not detected in brain, heart, lung, fetal liver, salivary gland, breast or intestine.

Tissue specificity

Validation Data



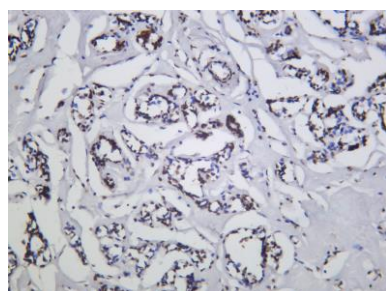
Various whole cell lysates were separated by 4-20% SDS-PAGE, and the membrane was blotted with anti-p53 (Phospho Ser15) antibody. The HRP-conjugated Goat anti-Rabbit IgG (H + L) antibody was used to detect the antibody.

Lane 1: NIH-3T3

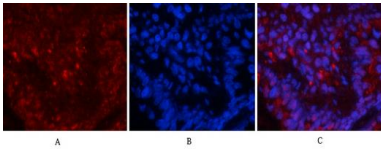
Lane 2: NIH-3T3 was treated with Etoposide(25μM) for 3 hours

Predicted band size: 44kDa

Observed band size: 55kDa



Human breast carcinoma was stained with anti-p53 (Phospho Ser15) rabbit antibody.

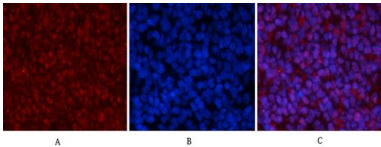


Immunofluorescence analysis of rat-lung tissue.

1. p53 (phospho Ser15) Antibody(red) was diluted at 1:200(4°C, overnight).
2. Cy3 labeled Secondary antibody was diluted at 1:300(room temperature, 50min).
3. Picture B: DAPI(blue) 10min.

Picture A: Target. Picture B: DAPI. Picture C: merge of A+B

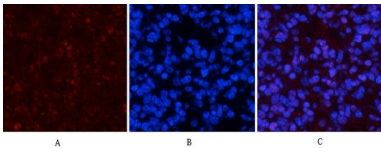
Immunofluorescence analysis of rat-spleen tissue.



1. p53 (phospho Ser15) Antibody(red) was diluted at 1:200(4°C, overnight).
2. Cy3 labeled Secondary antibody was diluted at 1:300(room temperature, 50min).
3. Picture B: DAPI(blue) 10min.

Picture A: Target. Picture B: DAPI. Picture C: merge of A+B

Immunofluorescence analysis of mouse-spleen tissue.



1. p53 (phospho Ser15) Antibody(red) was diluted at 1:200(4°C, overnight).
2. Cy3 labeled Secondary antibody was diluted at 1:300(room temperature, 50min).
3. Picture B: DAPI(blue) 10min.

Picture A: Target. Picture B: DAPI. Picture C: merge of A+B

For Research Use Only