

## MYL9 Rabbit mAb (AR1506)

### Key Features

Host Species:	Rabbit
Reactivity:	Human,Mouse,Rat
Applications:	WB,IHC,IF,ELISA
Isotype:	IgG,Kappa
MW:	20kD (Calculated) 20kD (Observed)

### Recommended Dilution Ratios

IHC:	1:200-1000
WB:	1:2000-10000
IF:	1:200-1000
ELISA:	1:5000-20000

### Storage

-15°C to -25°C/1 year (Do not lower than -25°C)

### Basic Information

Clonality	Monoclonal
-----------	------------

### Immunogen Information

Specificity	Endogenous
-------------	------------

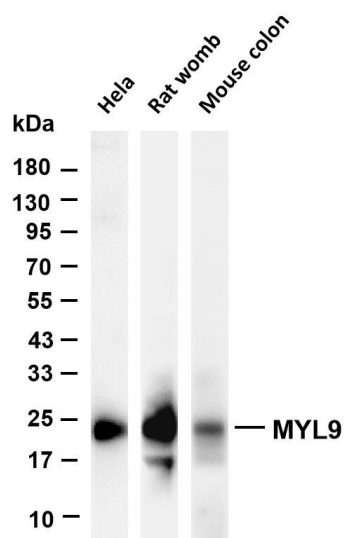
### Target Information

Gene name	MYL9
Protein Name	Myosin regulatory light polypeptide 9

Organism	Gene ID	UniProt ID
Human	10398	P24844
Mouse	98932	Q9CQ19
Rat	296313	Q64122

Cellular Localization	Cytoplasm
Tissue specificity	Smooth muscle tissues and in some, but not all, nonmuscle cells.

## Validation Data



Various whole cell lysates were separated by 4-20% SDS-PAGE, and the membrane was blotted with anti-MYL9 antibody. The HRP-conjugated Goat anti-Rabbit IgG(H + L) antibody was used to detect the antibody.

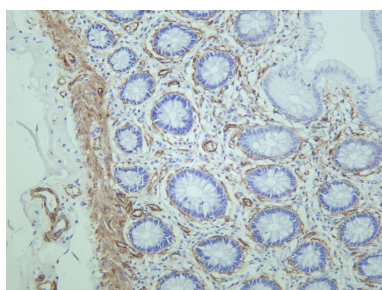
Lane 1: HeLa

Lane 2: Rat womb

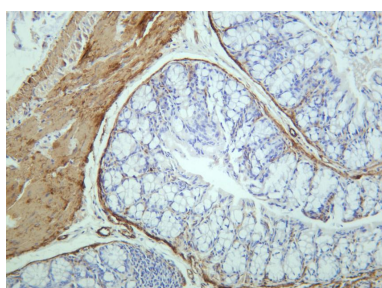
Lane 3: Mouse colon

Predicted band size: 20kDa

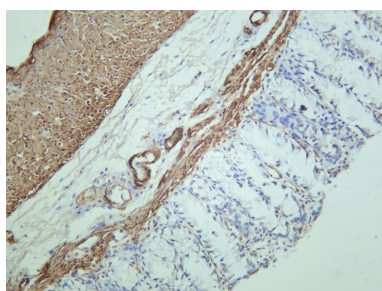
Observed band size: 20kDa



Human colon was stained with anti-MYL9 rabbit antibody



Mouse colon was stained with anti-MYL9 rabbit antibody



Rat colon was stained with anti-MYL9 rabbit antibody

For Research Use Only