

MAP2 Rabbit mAb (AR1494)

Key Features

Host Species:	Rabbit
Reactivity:	Human, Mouse, Rat
Applications:	WB, IHC, IF, ELISA
Isotype:	IgG, Kappa
MW:	200kD (Calculated) 280kD (Observed)

Recommended Dilution Ratios

IHC:	1:200-1000
WB:	1:1000-5000
IF:	1:200-1000
ELISA:	1:5000-20000

Storage

-15°C to -25°C/1 year (Do not lower than -25°C)

Basic Information

Clonality	Monoclonal
-----------	------------

Immunogen Information

Specificity	Endogenous
-------------	------------

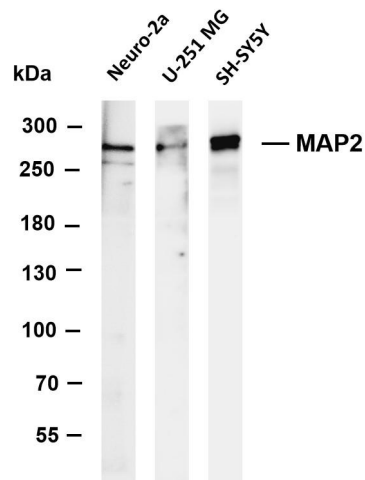
Target Information

Gene name	MAP2
Protein Name	Microtubule-associated protein 2

Organism	Gene ID	UniProt ID
Human	4133	P11137
Mouse		P20357
Rat		P15146

Cellular Localization	Cytoplasm, cytoskeleton. Cell projection, dendrite.
Tissue specificity	Brain, Brain cortex, Epithelium, Pancreas, Testis

Validation Data



Various whole cell lysates were separated by 4-8% SDS-PAGE, and the membrane was blotted with anti-MAP2 antibody. The HRP-conjugated Goat anti-Rabbit IgG(H + L) antibody was used to detect the antibody.

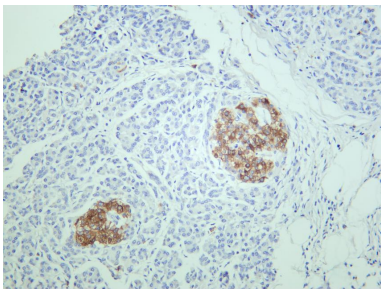
Lane 1: Neuro-2a

Lane 2: U-251 MG

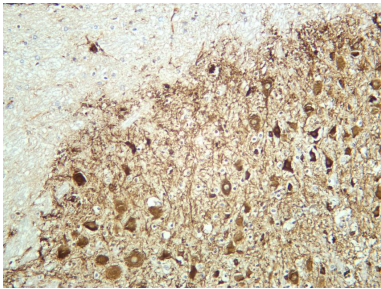
Lane 3: SH-SY5Y

Predicted band size: 200kDa

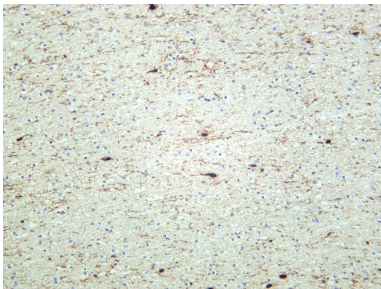
Observed band size: 280kDa



Human pancreas was stained with anti-MAP2 rabbit antibody



Mouse brain was stained with anti-MAP2 rabbit antibody



Human brain was stained with anti-MAP2 rabbit antibody