

## IFT88 Rabbit mAb (AR1475)

### Key Features

Host Species:	Rabbit
Reactivity:	Human,Mouse,Rat
Applications:	WB,IF,ELISA
Isotype:	IgG,Kappa
MW:	93kD (Calculated) 93kD (Observed)

### Recommended Dilution Ratios

WB:	1:2000-10000
IF:	1:200-1000
ELISA:	1:5000-20000

### Storage

-15°C to -25°C/1 year (Do not lower than -25°C)

### Basic Information

Clonality	Monoclonal
-----------	------------

### Immunogen Information

Specificity	Endogenous
-------------	------------

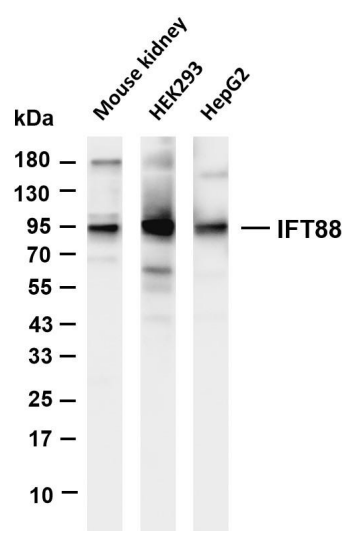
### Target Information

Gene name	IFT88 TG737 TTC10
Protein Name	Intraflagellar transport protein 88 homolog (Recessive polycystic kidney disease protein Tg737 homolog) (Tetratricopeptide repeat protein 10) (TPR repeat protein 10)

Organism	Gene ID	UniProt ID
Human	8100	Q13099
Mouse	21821	Q61371

Cellular Localization	Cytoplasm
Tissue specificity	Expressed in the heart, brain, liver, lung, kidney, skeletal muscle and pancreas.

# Validation Data



Various whole cell lysates were separated by 4-20% SDS-PAGE, and the membrane was blotted with anti-IFT88 antibody. The HRP-conjugated Goat anti-Rabbit IgG(H + L) antibody was used to detect the antibody.

Lane 1: Mouse kidney

Lane 2: HEK293

Lane 3: HepG2

Predicted band size: 93kDa

Observed band size: 93kDa

For Research Use Only