

## GPER1 Rabbit mAb (AR1465)

### Key Features

Host Species:	Rabbit
Reactivity:	Human,Mouse,Rat
Applications:	WB,IHC,IF,ELISA
Isotype:	IgG,Kappa
MW:	42kD (Calculated) 55kD (Observed)

### Recommended Dilution Ratios

IHC:	1:1000-5000
WB:	1:2000-10000
IF:	1:200-1000
ELISA:	1:5000-20000

### Storage

-15°C to -25°C/1 year (Do not lower than -25°C)

### Basic Information

Clonality	Monoclonal
-----------	------------

### Immunogen Information

Specificity	Endogenous
-------------	------------

### Target Information

Gene name	GPER1
Protein Name	G-protein coupled estrogen receptor 1

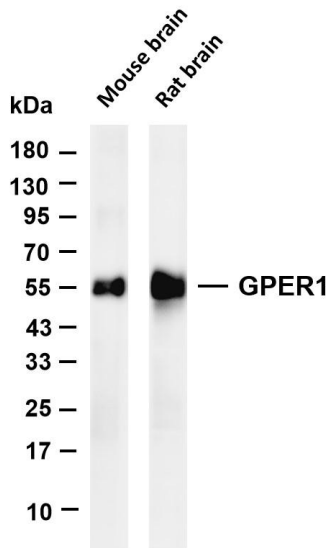
Organism	Gene ID	UniProt ID
Human	2852	Q99527
Mouse		Q8BMP4
Rat		O08878

Cellular Localization	Membrane
Tissue specificity	Expressed in placenta, endothelial and epithelial cells, non-laboring and laboring term myometrium, fibroblasts and cancer-associated fibroblasts (CAF), prostate cancer cells and invasive adenocarcinoma (at protein level). Ubiquitously expressed, but is

most abundant in

placenta. In brain regions, expressed as a 2.8 kb transcript in basal forebrain, frontal cortex, thalamus, hippocampus, caudate and putamen.

## Validation Data



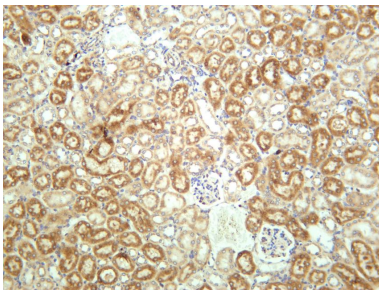
Various whole cell lysates were separated by 4-20% SDS-PAGE, and the membrane was blotted with anti-GPER1 antibody. The HRP-conjugated Goat anti-Rabbit IgG(H + L) antibody was used to detect the antibody.

Lane 1: Mouse brain

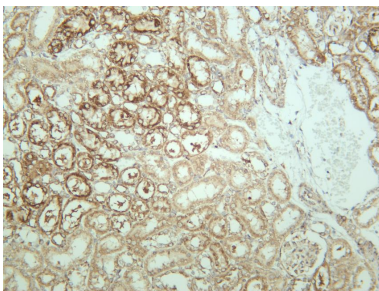
Lane 2: Rat brain

Predicted band size: 42kDa

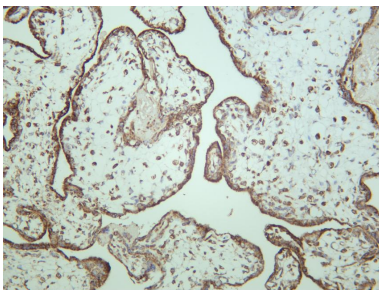
Observed band size: 55kDa



Mouse kidney was stained with anti-GPER1 rabbit antibody



Rat kidney was stained with anti-GPER1 rabbit antibody



Human placenta was stained with anti-GPER1 rabbit antibody

For Research Use Only