

EZH2 Rabbit mAb (AR1457)

Key Features

Host Species:	Rabbit
Reactivity:	Human, Mouse, Rat
Applications:	WB, IHC, IF, ELISA
Isotype:	IgG, Kappa
MW:	85kD (Calculated) 85kD (Observed)

Recommended Dilution Ratios

IHC:	1:500-1:1000
WB:	1:2000-10000
IF:	1:200-1000
ELISA:	1:5000-20000

Storage

-15°C to -25°C/1 year (Do not lower than -25°C)

Basic Information

Clonality	Monoclonal
-----------	------------

Immunogen Information

Specificity	Endogenous
-------------	------------

Target Information

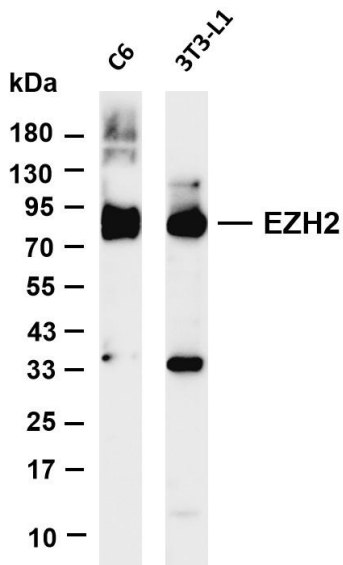
Gene name	EZH2 KMT6
Protein Name	Histone-lysine N-methyltransferase EZH2 (ENX-1) (Enhancer of zeste homolog 2) (Lysine N-methyltransferase 6)

Organism	Gene ID	UniProt ID
Human	2146	Q15910
Mouse		Q61188

Cellular Localization	Nucleus
Tissue specificity	In the ovary, expressed in primordial follicles and oocytes and also in external follicle cells (at protein level) (PubMed:31451685). Expressed in many tissues (PubMed:14532106). Overexpressed in numerous tumor types including carcinomas of the breast, colon,

larynx, lymphoma and testis (PubMed:14532106).

Validation Data



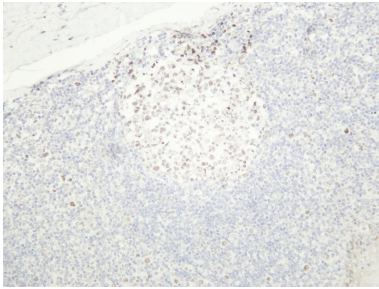
Various whole cell lysates were separated by 4-20% SDS-PAGE, and the membrane was blotted with anti-EZH2 antibody. The HRP-conjugated Goat anti-Rabbit IgG(H + L) antibody was used to detect the antibody.

Lane 1: C6

Lane 2: 3T3-L1

Predicted band size: 85kDa

Observed band size: 85kDa



Human tonsil was stained with anti-EZH2 rabbit antibody

For Research Use Only