

## DDX4 Rabbit mAb (AR1443)

### Key Features

Host Species:	Rabbit
Reactivity:	Human, Mouse, Rat
Applications:	WB, IHC, IF, ELISA
Isotype:	IgG, Kappa
MW:	79kD (Calculated) 79kD (Observed)

### Recommended Dilution Ratios

IHC:	1:200-1000
WB:	1:2000-10000
IF:	1:200-1000
ELISA:	1:5000-20000

### Storage

-15°C to -25°C/1 year (Do not lower than -25°C)

### Basic Information

Clonality	Monoclonal
-----------	------------

### Immunogen Information

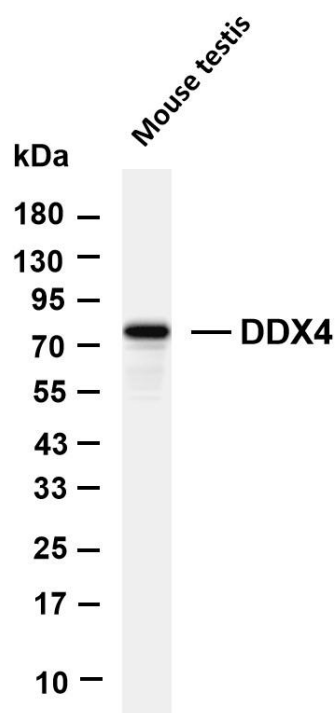
Specificity	Endogenous
-------------	------------

### Target Information

Gene name	DDX4
Protein Name	Probable ATP-dependent RNA helicase DDX4

	Organism	Gene ID	UniProt ID
	Human	54514	Q9NQI0
	Mouse		Q61496
Cellular Localization	Cytoplasm. Cytoplasm, perinuclear region. Component of the meiotic nuage, also named P granule, a germ-cell-specific organelle required to repress transposon activity during meiosis.		
Tissue specificity	Expressed only in ovary and testis. Expressed in migratory primordial germ cells in the region of the gonadal ridge in both sexes.		

## Validation Data

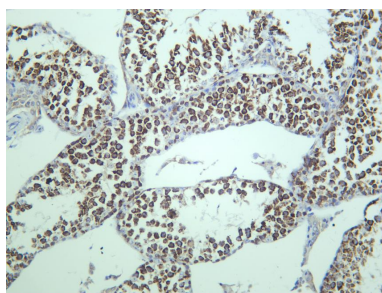


Various whole cell lysates were separated by 4-20% SDS-PAGE, and the membrane was blotted with anti-DDX4 antibody. The HRP-conjugated Goat anti-Rabbit IgG (H + L) antibody was used to detect the antibody.

Lane 1: Mouse testis

Predicted band size: 79kDa

Observed band size: 79kDa



Mouse testis was stained with anti-DDX4 rabbit antibody

For Research Use Only