

## CD90 Rabbit mAb (AR1430)

### Key Features

Host Species:	Rabbit
Reactivity:	Human, Mouse
Applications:	WB, IHC, IF, ELISA
Isotype:	IgG, Kappa
MW:	18kD (Calculated) 22kD (Observed)

### Recommended Dilution Ratios

IHC:	1:2000-10000
WB:	1:2000-10000
IF:	1:200-1000
ELISA:	1:5000-20000

### Storage

-15°C to -25°C/1 year (Do not lower than -25°C)

### Basic Information

Clonality	Monoclonal
-----------	------------

### Immunogen Information

Specificity	Endogenous
-------------	------------

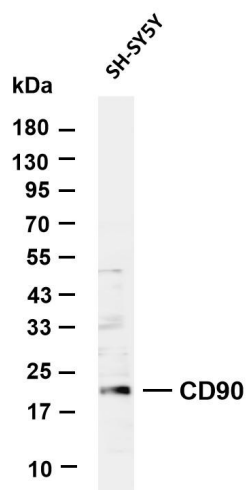
### Target Information

Gene name	THY1
Protein Name	Thy-1 membrane glycoprotein

Organism	Gene ID	UniProt ID
Human	7070	P04216
Mouse		P01831

Cellular Localization	Cell membrane; Lipid-anchor, GPI-anchor.
Tissue specificity	Amygdala, Brain, Eye, Liver

## Validation Data

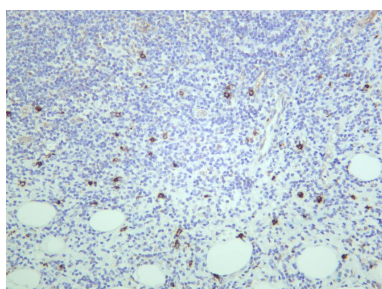


Various whole cell lysates were separated by 4-20% SDS-PAGE, and the membrane was blotted with anti-CD90 antibody. The HRP-conjugated Goat anti-Rabbit IgG(H + L) antibody was used to detect the antibody.

Lane 1: SH-SY5Y

Predicted band size: 18kDa

Observed band size: 22kDa



Human tonsil was stained with anti-CD90 rabbit antibody

For Research Use Only