

# Cleaved Caspase-7 (Asp198) Rabbit mAb (AR1424)

## Key Features

Host Species:	Rabbit
Reactivity:	Human, Mouse, Rat
Applications:	WB, IF, ELISA
Isotype:	IgG, Kappa
MW:	34kD (Calculated) 18kD (Observed)

## Recommended Dilution Ratios

WB:	1:2000-10000
IF:	1:200-1000
ELISA:	1:5000-20000

## Storage

-15°C to -25°C/1 year (Do not lower than -25°C)

## Basic Information

Clonality	Monoclonal
-----------	------------

## Immunogen Information

Specificity	Endogenous
-------------	------------

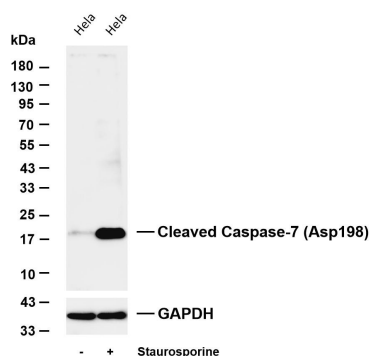
## Target Information

Gene name	CASP7
Protein Name	Caspase7

Organism	Gene ID	UniProt ID
Human	840	P55210
Mouse	12369	P97864

Cellular Localization	Cytoplasm.
Tissue specificity	Highly expressed in lung, skeletal muscle, liver, kidney, spleen and heart, and moderately in testis. No expression in the brain.

## Validation Data



Various whole cell lysates were separated by 4-20% SDS-PAGE, and the membrane was blotted with anti-Cleaved Caspase-7 (Asp198) antibody. The HRP-conjugated Goat anti-Rabbit IgG (H + L) antibody was used to detect the antibody.

Lane 1: HeLa

Lane 2: HeLa was treated with Staurosporine(1uM) for 5 hours

Predicted band size: 34kDa

Observed band size: 18kDa

For Research Use Only