

## C/EBP $\alpha$ Rabbit mAb (AR1418)

### Key Features

Host Species:	Rabbit
Reactivity:	Human, Mouse, Rat
Applications:	WB, IF, ELISA
Isotype:	IgG, Kappa
MW:	38kD (Calculated) 43kD (Observed)

### Recommended Dilution Ratios

WB:	1:2000-10000
IF:	1:200-1000
ELISA:	1:5000-20000

### Storage

-15°C to -25°C/1 year (Do not lower than -25°C)

### Basic Information

Clonality	Monoclonal
-----------	------------

### Immunogen Information

Specificity	Endogenous
-------------	------------

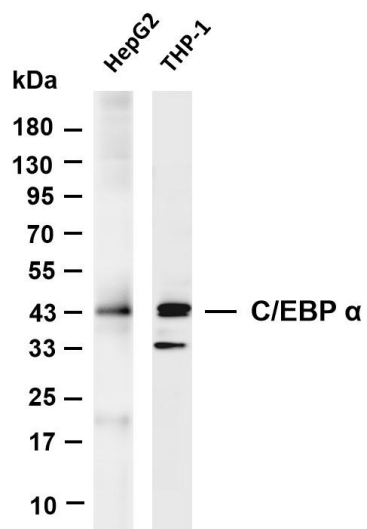
### Target Information

Gene name	CEBPA
Protein Name	CCAAT/enhancer-binding protein alpha

Organism	Gene ID	UniProt ID
Human	1050	P49715
Mouse	12606	P53566
Rat	24252	P05554

Cellular Localization	Nucleus
Tissue specificity	Liver, Pancreas, Umbilical cord, White Matter pool- 5 brain tissues.

## Validation Data



Various whole cell lysates were separated by 4-20% SDS-PAGE, and the membrane was blotted with anti-C/EBP  $\alpha$  antibody. The HRP-conjugated Goat anti-Rabbit IgG(H + L) antibody was used to detect the antibody.

Lane 1: HepG2

Lane 2: THP-1

Predicted band size: 38kDa

Observed band size: 43kDa

For Research Use Only