

PAX-8 Rabbit mAb (AR1415)

Key Features

Host Species:	Rabbit
Reactivity:	Human, Mouse, Rat
Applications:	WB, IHC, IF, ELISA
Isotype:	IgG, Kappa
MW:	48kD (Calculated) 55kD (Observed)

Recommended Dilution Ratios

IHC:	1:200-1000
WB:	1:2000-10000
IF:	1:200-1000
ELISA:	1:5000-20000

Storage

-15°C to -25°C/1 year (Do not lower than -25°C)

Basic Information

Clonality	Monoclonal
-----------	------------

Immunogen Information

Specificity	Endogenous
-------------	------------

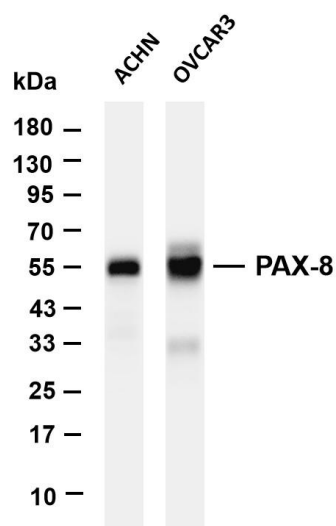
Target Information

Gene name	PAX8
Protein Name	PAX-8

Organism	Gene ID	UniProt ID
Human	7849	Q06710
Mouse	18510	Q00288
Rat	81819	P51974

Cellular Localization	Nucleus
Tissue specificity	Expressed in the excretory system, thyroid gland and Wilms tumors.

Validation Data



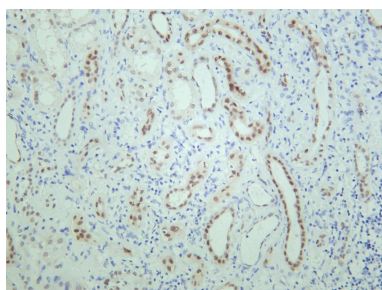
Various whole cell lysates were separated by 4-20% SDS-PAGE, and the membrane was blotted with anti-PAX-8 antibody. The HRP-conjugated Goat anti-Rabbit IgG(H + L) antibody was used to detect the antibody.

Lane 1: ACHN

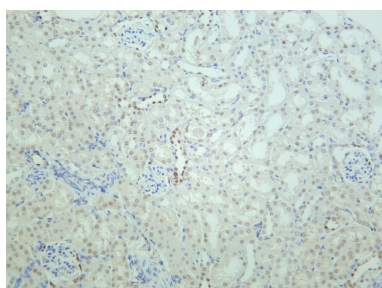
Lane 2: OVACR3

Predicted band size: 48kDa

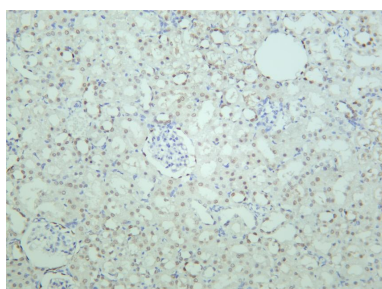
Observed band size: 55kDa



Human kidney was stained with anti-PAX-8 rabbit antibody



Mouse kidney was stained with anti-PAX-8 rabbit antibody



Rat kidney was stained with anti-PAX-8 rabbit antibody