

ATG16L1 Rabbit mAb (AR1406)

Key Features

Host Species:	Rabbit
Reactivity:	Human, Mouse, Rat
Applications:	WB, IHC, IF, ELISA
Isotype:	IgG, Kappa
MW:	68kD (Calculated) 68kD (Observed)

Recommended Dilution Ratios

IHC:	1:200-1000
WB:	1:2000-10000
IF:	1:200-1000
ELISA:	1:5000-20000

Storage

-15°C to -25°C/1 year (Do not lower than -25°C)

Basic Information

Clonality	Monoclonal
-----------	------------

Immunogen Information

Specificity	Endogenous
-------------	------------

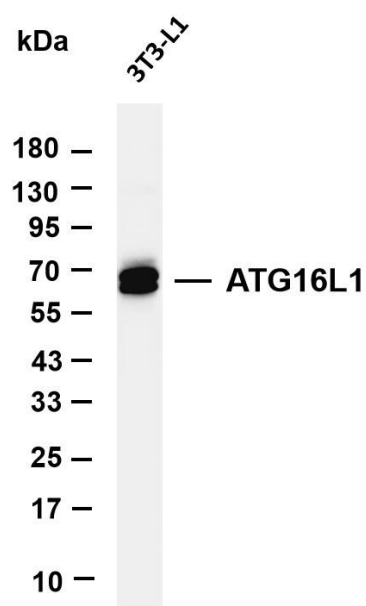
Target Information

Gene name	ATG16L1
Protein Name	Autophagy-related protein 16-1

Organism	Gene ID	UniProt ID
Human	55054	Q676U5
Mouse		Q8C0J2

Cellular Localization	Cytoplasm
Tissue specificity	Brain, Colon, Epithelium, Fetal brain, Human lung, Mammary gland, Placenta, Small

Validation Data

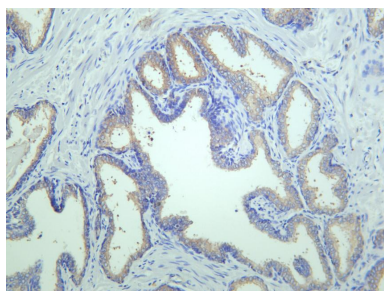


Various whole cell lysates were separated by 4-20% SDS-PAGE, and the membrane was blotted with anti-ATG16L1 antibody. The HRP-conjugated Goat anti-Rabbit IgG(H + L) antibody was used to detect the antibody.

Lane 1: 3T3-L1

Predicted band size: 68kDa

Observed band size: 68kDa



Human prostate was stained with anti-ATG16L1 rabbit antibody

For Research Use Only