

# TAGLN Rabbit mAb (AR1391)

## Key Features

Host Species:	Rabbit
Reactivity:	Human, Mouse, Rat
Applications:	WB, IHC, IF, ELISA
Isotype:	IgG, Kappa
MW:	23kD (Calculated) 23kD (Observed)

## Recommended Dilution Ratios

IHC:	1:200-1000
WB:	1:2000-10000
IF:	1:200-1000
ELISA:	1:5000-20000

## Storage

-15°C to -25°C/1 year (Do not lower than -25°C)

## Basic Information

Clonality	Monoclonal
-----------	------------

## Immunogen Information

Specificity	Endogenous
-------------	------------

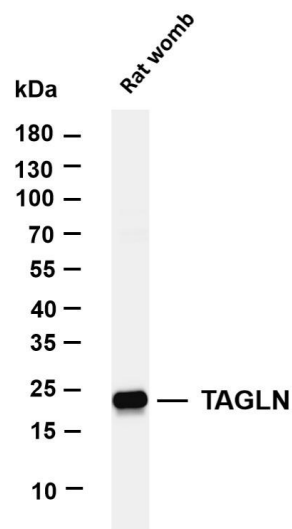
## Target Information

Gene name	TAGLN SM22 WS3-10
Protein Name	Transgelin (22 kDa actin-binding protein) (Protein WS3-10) (Smooth muscle protein 22- alpha) (SM22-alpha)

Organism	Gene ID	UniProt ID
Human	6876	Q01995
Mouse		P37804
Rat		P31232

Cellular Localization	Cytoplasm
Tissue specificity	Aorta, Bone marrow, Brain, Fibroblast, Human small intestine, Peripheral blood, Uterus, White Matter

Validation Data

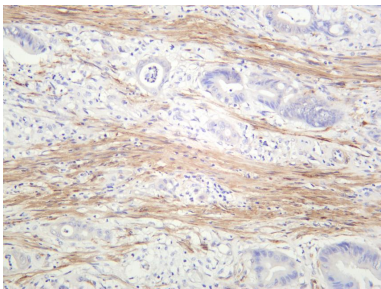


Various whole cell lysates were separated by 4-20% SDS-PAGE, and the membrane was blotted with anti-TAGLN antibody. The HRP-conjugated Goat anti-Rabbit IgG(H + L) antibody was used to detect the antibody.

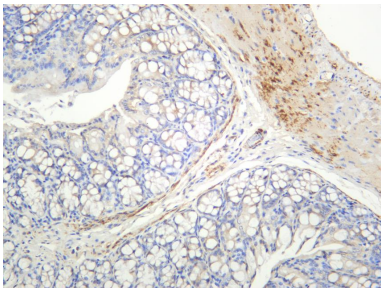
Lane 1: Rat womb

Predicted band size: 23kDa

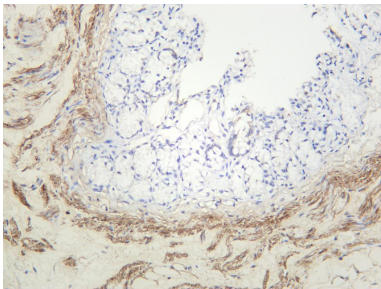
Observed band size: 23kDa



Human colon carcinoma was stained with anti-TAGLN rabbit antibody



Mouse colon was stained with anti-TAGLN rabbit antibody



Rat colon was stained with anti-TAGLN rabbit antibody