

## S100B Rabbit mAb (AR1379)

### Key Features

Host Species:	Rabbit
Reactivity:	Human, Mouse, Rat
Applications:	WB, IHC, IF, ELISA
Isotype:	IgG, Kappa
MW:	11kD (Calculated) 11kD (Observed)

### Recommended Dilution Ratios

IHC:	1:400-2000
WB:	1:2000-10000
IF:	1:200-1000
ELISA:	1:5000-20000

### Storage

-15°C to -25°C/1 year (Do not lower than -25°C)

### Basic Information

Clonality	Monoclonal
-----------	------------

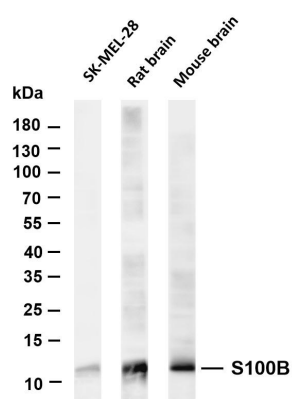
### Immunogen Information

Specificity	Endogenous
-------------	------------

### Target Information

Gene name	S100B		
	Organism	Gene ID	UniProt ID
	Human	6285	P04271
	Mouse		P50114
Cellular Localization	Cytoplasm, Nucleus		
Tissue specificity	Although predominant among the water-soluble brain proteins, S100 is also found in a variety of other tissues.		

## Validation Data



Various whole cell lysates were separated by 4-20% SDS-PAGE, and the membrane was blotted with anti-S100B antibody. The HRP-conjugated Goat anti-Rabbit IgG(H + L) antibody was used to detect the antibody.

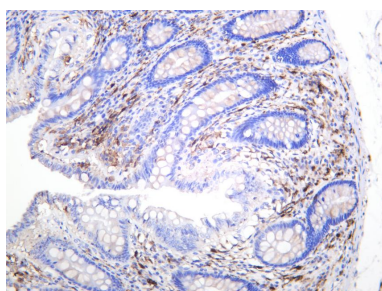
Lane 1: SKMEL-28

Lane 2: Rat brain

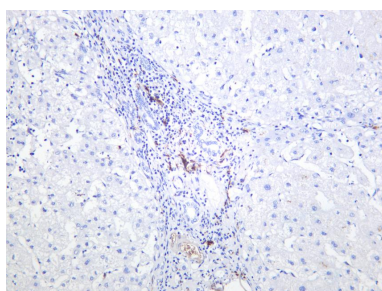
Lane 3: Mouse brain

Predicted band size: 11kDa

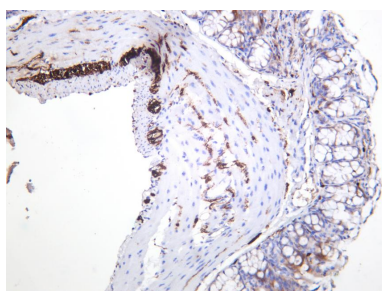
Observed band size: 11kDa



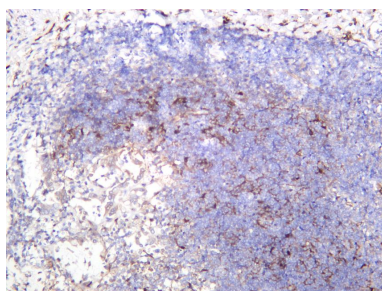
Human colon was stained with anti-S100B rabbit antibody



Human liver was stained with anti-S100B rabbit antibody



Mouse colon was stained with anti-S100B rabbit antibody



Rat colon was stained with anti-S100B rabbit antibody