

PKC δ Rabbit mAb (AR1369)

Key Features

Host Species:	Rabbit
Reactivity:	Human, Mouse, Rat
Applications:	WB, IHC, IF, ELISA
Isotype:	IgG, Kappa
MW:	78kD (Calculated) 78kD (Observed)

Recommended Dilution Ratios

IHC:	1:500-2000
WB:	1:2000-10000
IF:	1:200-1000
ELISA:	1:5000-20000

Storage

-15°C to -25°C/1 year (Do not lower than -25°C)

Basic Information

Clonality	Monoclonal
-----------	------------

Immunogen Information

Specificity	Endogenous
-------------	------------

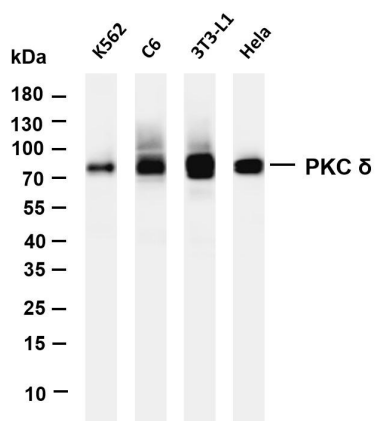
Target Information

Gene name	PRKCD
Protein Name	Protein kinase C delta type

Organism	Gene ID	UniProt ID
Human	5580	Q05655
Mouse		P28867

Cellular Localization	Cytoplasm, Nucleus
Tissue specificity	Epithelium, Hippocampus, Liver, Platelet, Skin

Validation Data



Various whole cell lysates were separated by 4-20% SDS-PAGE, and the membrane was blotted with anti-PKC δ antibody. The HRP-conjugated Goat anti-Rabbit IgG(H + L) antibody was used to detect the antibody.

Lane 1: K562

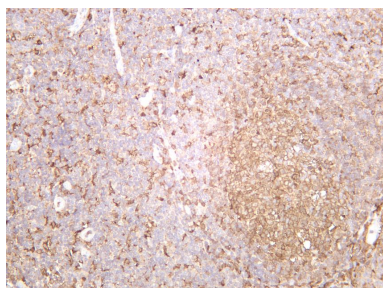
Lane 2: C6

Lane 3: 3T3-L1

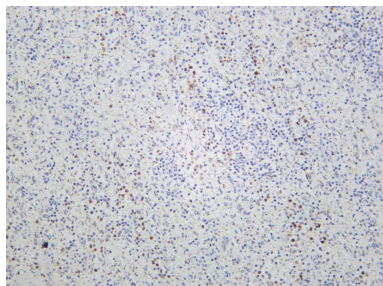
Lane 4: HeLa

Predicted band size: 78kDa

Observed band size: 78kDa



Human tonsil was stained with anti-PKC δ rabbit antibody



Human spleen was stained with anti-PKC δ rabbit antibody

For Research Use Only