

PDI Rabbit mAb (AR1363)

Key Features

Host Species:	Rabbit
Reactivity:	Human, Mouse, Rat,
Applications:	WB, IHC, IF, ELISA
Isotype:	IgG, Kappa
MW:	57kD (Calculated) 57kD (Observed)

Recommended Dilution Ratios

IHC:	1:200-1000
WB:	1:2000-10000
IF:	1:200-1000
ELISA:	1:5000-20000

Storage

-15°C to -25°C/1 year (Do not lower than -25°C)

Basic Information

Clonality	Monoclonal
-----------	------------

Immunogen Information

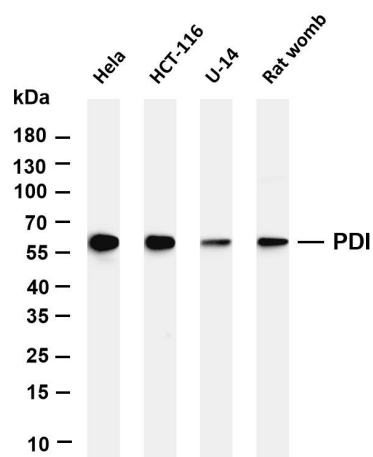
Specificity	Endogenous
-------------	------------

Target Information

Gene name	P4HB ERBA2L PDI PDIA1 PO4DB
Protein Name	Protein disulfide-isomerase (PDI) (Cellular thyroid hormone-binding protein) (Prolyl 4-hydroxylase subunit beta) (p55)

	Organism	Gene ID	UniProt ID
	Human	5034	P07237
	Mouse	18453	P09103
	Rat	25506	P04785
Cellular Localization	Endoplasmic reticulum		

Validation Data



Various whole cell lysates were separated by 4-20% SDS-PAGE, and the membrane was blotted with anti-PDI antibody. The HRP-conjugated Goat anti-Rabbit IgG(H + L) antibody was used to detect the antibody.

Lane 1: HeLa

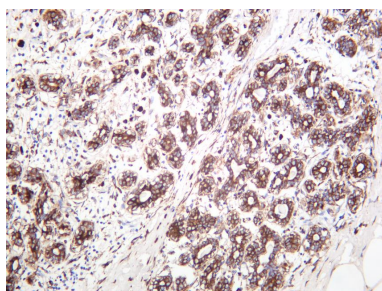
Lane 2: HCT-116

Lane 3: U-14

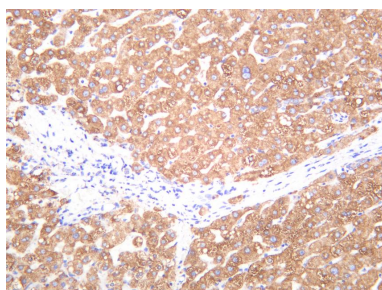
Lane 4: Rat womb

Predicted band size: 57kDa

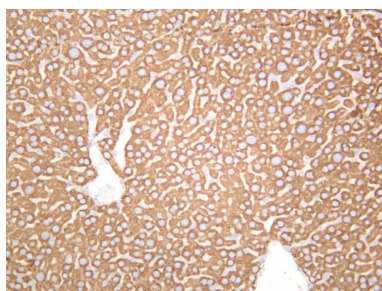
Observed band size: 57kDa



Human breast carcinoma was stained with anti-PDI rabbit antibody



Human liver was stained with anti-PDI rabbit antibody



Rat liver was stained with anti-PDI rabbit antibody

For Research Use Only