

## CaMKII $\alpha$ Rabbit mAb (AR1343)

### Key Features

Host Species:	Rabbit
Reactivity:	Human,Mouse,Rat
Applications:	WB,IHC,IF,ELISA
Isotype:	IgG,Kappa
MW:	54kD (Calculated) 54kD (Observed)

### Recommended Dilution Ratios

IHC	1:200-1000
WB:	1:2000-10000
IF:	1:200-1000
ELISA:	1:5000-20000

### Storage

-15°C to -25°C/1 year (Do not lower than -25°C)

### Basic Information

Clonality	Monoclonal
-----------	------------

### Immunogen Information

Specificity	Endogenous
-------------	------------

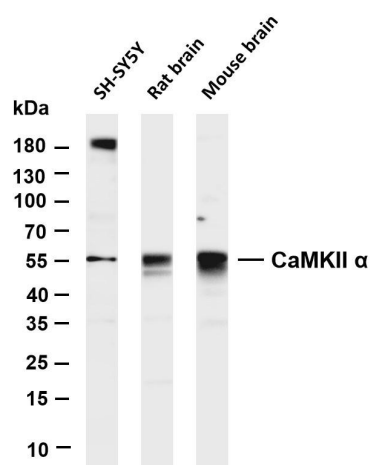
### Target Information

Gene name	CAMK2A CAMKA KIAA0968
Protein Name	Calcium/calmodulin-dependent protein kinase type II subunit alpha (CaM kinase II subunit alpha) (CaMK-II subunit alpha) (EC 2.7.11.17)

Organism	Gene ID	UniProt ID
Human	815	Q9UQM7
Mouse	12322	P11798
Rat	25400	P11275

Cellular Localization	Synapse
-----------------------	---------

## Validation Data



Various whole cell lysates were separated by 4-20% SDS-PAGE, and the membrane was blotted with anti-CaMKII α antibody. The HRP-conjugated Goat anti-Rabbit IgG(H + L) antibody was used to detect the antibody.

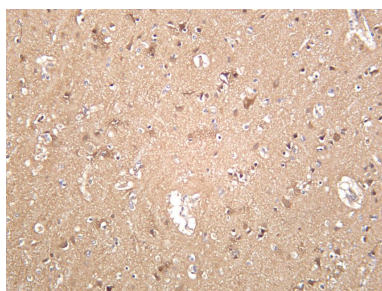
Lane 1: SH-SY5Y

Lane 2: Rat brain

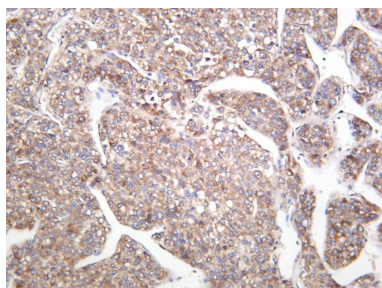
Lane 3: Mouse brain

Predicted band size: 54kDa

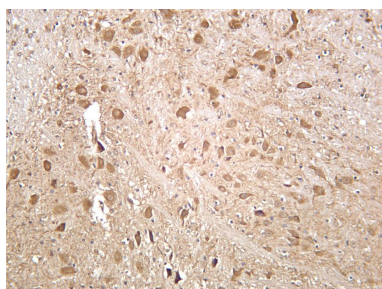
Observed band size: 54kDa



Human brain was stained with anti-CaMKII α rabbit antibody



Human hepatocellular carcinoma was stained with anti-CaMKII α rabbit antibody



Mouse brain was stained with anti-CaMKII α rabbit antibody

For Research Use Only