

## E2F-1 Rabbit mAb (AR1326)

### Key Features

Host Species:	Rabbit
Reactivity:	Human, Mouse, Rat
Applications:	WB, IHC, IF, ELISA
Isotype:	IgG, Kappa
MW:	47kD (Calculated) 60kD (Observed)

### Recommended Dilution Ratios

IHC:	1:200-1000
WB:	1:2000-10000
IF:	1:200-1000
ELISA:	1:5000-20000

### Storage

-15°C to -25°C/1 year (Do not lower than -25°C)

### Basic Information

Clonality	Monoclonal
-----------	------------

### Immunogen Information

Specificity	Endogenous
-------------	------------

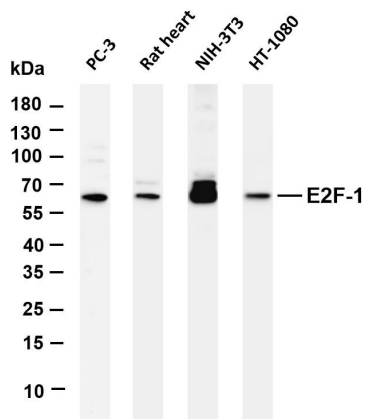
### Target Information

Gene name	E2F1
Protein Name	Transcription factor E2F1

Organism	Gene ID	UniProt ID
Human	1869	Q01094
Mouse	13555	Q61501

Cellular Localization	Nucleus
Tissue specificity	Brain, Epithelium, Pancreas, Skin

## Validation Data



Various whole cell lysates were separated by 4-20% SDS-PAGE, and the membrane was blotted with anti-E2F-1 antibody. The HRP-conjugated Goat anti-Rabbit IgG(H + L) antibody was used to detect the antibody.

Lane 1: PC-3

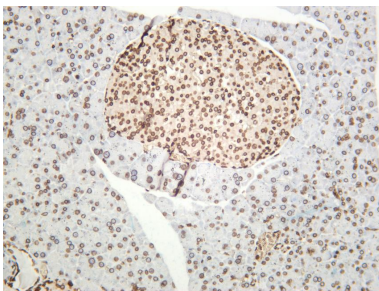
Lane 2: Rat heart

Lane 3: NIH-3T3

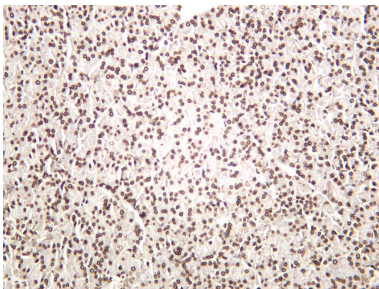
Lane 4: HT-1080

Predicted band size: 47kDa

Observed band size: 60kDa



Mouse pancreas was stained with anti-E2F-1 rabbit antibody



Rat pancreas was stained with anti-E2F-1 rabbit antibody

For Research Use Only