

DNA PKcs Rabbit mAb (AR1324)

Key Features

Host Species:	Rabbit
Reactivity:	Human, Mouse, Rat
Applications:	WB, IHC, IF, ELISA
Isotype:	IgG, Kappa
MW:	469kD (Calculated) 469kD (Observed)

Recommended Dilution Ratios

IHC:	1:200-1000
WB:	1:2000-10000
IF:	1:200-1000
ELISA:	1:5000-20000

Storage

-15°C to -25°C/1 year (Do not lower than -25°C)

Basic Information

Clonality	Monoclonal
-----------	------------

Immunogen Information

Specificity	Endogenous
-------------	------------

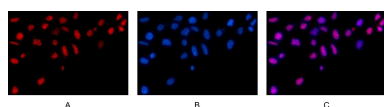
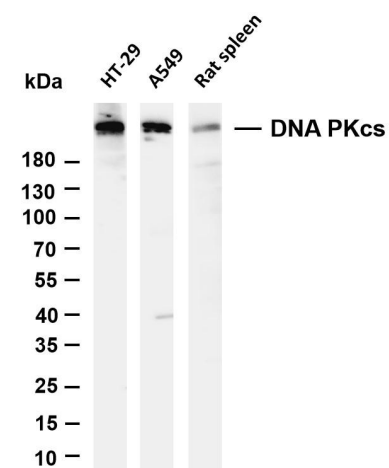
Target Information

Gene name	PRKDC
Protein Name	DNA-dependent protein kinase catalytic subunit

Organism	Gene ID	UniProt ID
Human	5591	P78527
Mouse	19090	P97313

Cellular Localization	Nucleus
Tissue specificity	Brain, Cervix carcinoma, Epithelium, Fetal lung, Placenta

Validation Data



Various whole cell lysates were separated by 4-20% SDS-PAGE, and the membrane was blotted with anti-DNA PKcs antibody. The HRP-conjugated Goat anti-Rabbit IgG(H + L) antibody was used to detect the antibody.

Lane 1: HT-29

Lane 2: A549

Predicted band size: 469kDa

Observed band size: 469kDa

Immunofluorescence analysis of HEK293.

Picture A: DNA PKcs antibody (red).

Picture B: DAPI (blue).

Picture C: Merge of A+B

For Research Use Only