

ASK1 Rabbit mAb (AR1304)

Key Features

Host Species:	Rabbit
Reactivity:	Human, Mouse
Applications:	WB, IHC, IF, ELISA
Isotype:	IgG, Kappa
MW:	155kD (Calculated) 155kD (Observed)

Recommended Dilution Ratios

IHC:	1:100-400
WB:	1:1000-5000
IF:	1:200-1000
ELISA:	1:5000-20000

Storage

-15°C to -25°C/1 year (Do not lower than -25°C)

Basic Information

Clonality	Monoclonal
-----------	------------

Immunogen Information

Specificity	Endogenous
-------------	------------

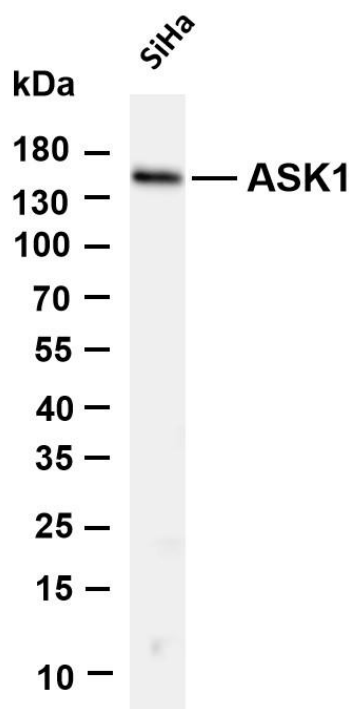
Target Information

Gene name	MAP3K5
Protein Name	Mitogen-activated protein kinase 5

Organism	Gene ID	UniProt ID
Human	4217	Q99683
Mouse	26408	O35099

Cellular Localization	Cytoplasm
Tissue specificity	Abundantly expressed in heart and pancreas.

Validation Data

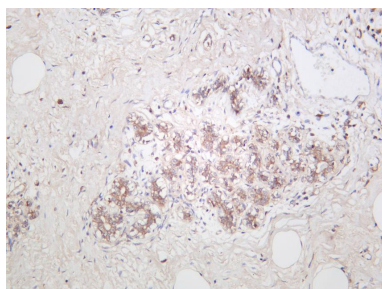


Various whole cell lysates were separated by 4-20% SDS-PAGE, and the membrane was blotted with anti-ASK1 antibody. The HRP-conjugated Goat anti-Rabbit IgG(H + L) antibody was used to detect the antibody.

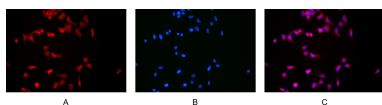
Lane 1: SiHa

Predicted band size: 155kDa

Observed band size: 155kDa



Human breast carcinoma was stained with anti-ASK1 rabbit antibody



Immunofluorescence analysis of HEK293.

Picture A: ASK1 antibody (red).

Picture B: DAPI (blue).

Picture C: Merge of A+B

For Research Use Only