

NF- κ B p65 (Phospho Ser536) Rabbit mAb (AR1959)

Key Features

Host Species:	Rabbit
Reactivity:	Human, Mouse, Rat
Applications:	WB, IF, IP, ELISA
Isotype:	IgG, Kappa
MW:	60kDa (Calculated) 60kDa (Observed)

Recommended Dilution Ratios

WB:	1:2000-10000
IF:	1:200-1000
ELISA:	1:5000-20000
IP:	1:50-200

Storage

-15°C to -25°C/1 year (Do not lower than -25°C)

Basic Information

Clonality	Monoclonal
-----------	------------

Immunogen Information

Specificity	Endogenous
-------------	------------

Target Information

Gene name	RELA
Protein Name	Transcription factor p65

Organism	Gene ID	UniProt ID
Human	5970	Q04206
Mouse	19697	Q04207

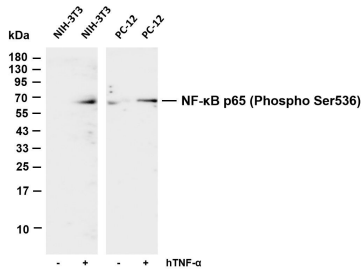
Cellular Localization	Nucleus. Cytoplasm. Nuclear, but also found in the cytoplasm in an inactive form complexed to an inhibitor (I-kappa-B) (PubMed:1493333). Colocalized with DDX1 in the nucleus upon TNF -alpha induction (PubMed:19058135). Colocalizes with GF11 in the nucleus after LPS stimulation (PubMed:20547752). Translocation to
-----------------------	---

the nucleus is impaired in *L.monocytogenes* infection (PubMed: 20855622)

Tissue specificity

Bone, Colon, Pancreas, Placenta

Validation Data



Various whole cell lysates were separated by 4-20% SDS-PAGE, and the membrane was blotted with anti-NF-κB p65 (Phospho Ser536) antibody. The HRP-conjugated Goat anti-Rabbit IgG(H + L) antibody was used to detect the antibody.

Lane 1: NIH-3T3

Lane 2: NIH-3T3 was treated with hTNF-α for 5 minutes

Lane 3: PC-12

Lane 4: PC-12 was treated with hTNF-α(20 ng/mL) for 10 minutes

Predicted band size: 60kDa

Observed band size: 60kDa

For Research Use Only