

IRE1 α (Phospho Ser724) Rabbit mAb (AR1856)

Key Features

Host Species:	Rabbit
Reactivity:	Human, Mouse, Rat
Applications:	WB, IHC, IF, IP, ELISA
Isotype:	IgG, Kappa
MW:	110kDa (Calculated) 120kDa (Observed)

Recommended Dilution Ratios

WB:	1:2000-10000
IHC:	1:200-1000
IF:	1:200-1000
IP:	1:50-200
ELISA	1:5000-20000

Storage

-15°C to -25°C/1 year (Do not lower than -25°C)

Basic Information

Clonality	Monoclonal
-----------	------------

Immunogen Information

Specificity	IRE1 α (Phospho Ser724) Antibody detects endogenous levels of IRE1 protein only when phosphorylated at S724. The name of modified sites may be influenced by many factors, such as species (the modified site was not originally found in human samples) and the change of protein sequence (the previous protein sequence is incomplete, and the protein sequence may be prolonged with the development of protein sequencing technology). When naming, we will use the "numbers" in historical reference to keep the sites consistent with the reports. The antibody binds to the following modification sequence (lowercase letters are modification sites): RHsFS
-------------	------------------------------------------------------------------------------------------------------------------------------------------------------------------------------------------------------------------------------------------------------------------------------------------------------------------------------------------------------------------------------------------------------------------------------------------------------------------------------------------------------------------------------------------------------------------------------------------------------------------------------------------------------------------------------

Target Information

Gene name	ERN1 IRE1
-----------	-----------

Protein Name

Serine/threonine-protein kinase/endoribonuclease IRE1

Organism	Gene ID	UniProt ID
Human	2081	O75460
Mouse	78943	Q9EQY0

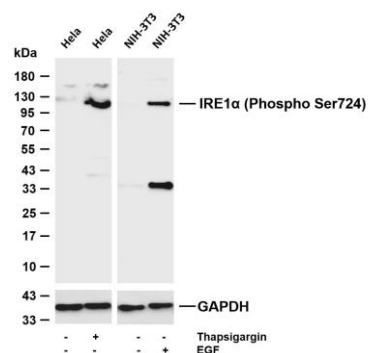
Cellular Localization

Endoplasmic reticulum membrane

Tissue specificity

Ubiquitously expressed. High levels observed in pancreatic tissue

Validation Data



Various whole cell lysates were separated by 4-20% SDS-PAGE, and the membrane was blotted with anti-IRE1α (Phospho Ser724) antibody. The HRP-conjugated Goat anti-Rabbit IgG (H + L) antibody was used to detect the antibody.

Lane 1: HeLa

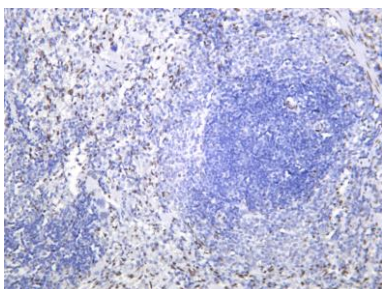
Lane 2: HeLa was treated with Thapsigargin(300nM) for 30 minutes

Lane 3: NIH-3T3

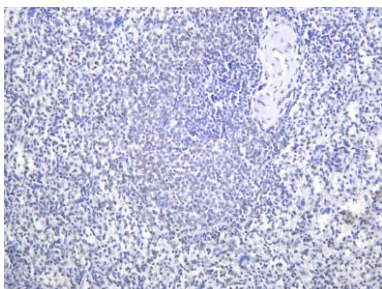
Lane 4: NIH-3T3 was treated with EGF(100ng/ml) for 20 minutes

Predicted band size: 110kDa

Observed band size: 120kDa



Rat spleen was stained with anti-IRE1α (Phospho Ser724) rabbit antibody.



Human spleen was stained with anti-IRE1α (Phospho Ser724) rabbit antibody.

For Research Use Only