

## 4E-BP1 (Phospho Thr70) Rabbit mAb (AR1855)

### Key Features

Host Species:	Rabbit
Reactivity:	Human, Mouse, Rat
Applications:	WB, IHC, IF, ELISA
Isotype:	IgG, Kappa
MW:	13kDa (Calculated) 15-20kDa (Observed)

### Recommended Dilution Ratios

WB:	1:500-2000
IHC:	1:200-1000
IF:	1:200-1000
ELISA	1:5000-20000

### Storage

-15°C to -25°C/1 year (Do not lower than -25°C)

### Basic Information

Clonality	Monoclonal
-----------	------------

### Immunogen Information

Specificity	4E-BP1 (Phospho Thr70) Antibody detects endogenous levels of 4E-BP1 protein only when phosphorylated at T70. The name of modified sites may be influenced by many factors, such as species (the modified site was not originally found in human samples) and the change of protein sequence (the previous protein sequence is incomplete, and the protein sequence may be prolonged with the development of protein sequencing technology). When naming, we will use the "numbers" in historical reference to keep the sites consistent with the reports. The antibody binds to the following modification sequence (lowercase letters are modification sites): TKtPP
-------------	---

### Target Information

Gene name	EIF4EBP1
Protein Name	Eukaryotic translation initiation factor 4E-binding protein 1

Organism	Gene ID	UniProt ID
Human	1978	Q13541
Mouse	13685	Q60876
Rat	116636	Q62622

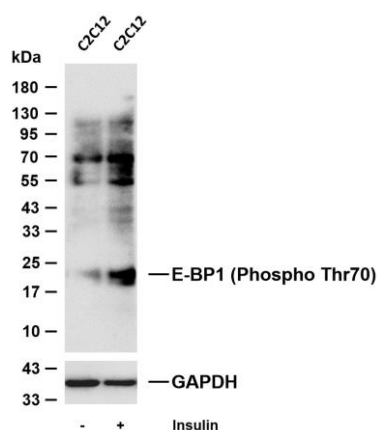
Cellular Localization

Nucleus

Tissue specificity

Colon, Epithelium, Lung, Placenta, Platelet

## Validation Data



Various whole cell lysates were separated by 4-20% SDS-PAGE, and the membrane was blotted with anti-E-BP1 (Phospho Thr70) antibody. The HRP-conjugated Goat anti-Rabbit IgG (H + L) antibody was used to detect the antibody.

Lane 1: C2C12

Lane 2: C2C12 was treated with Insulin(100 nM) for 15 minutes

Predicted band size: 13kDa

Observed band size: 15-20kDa

For Research Use Only