

## CD45 Rabbit mAb (AbFluor 488) (AR1847)

### Key Features

Host Species:	Rabbit
Reactivity:	Human
Applications:	IF
Isotype:	IgG,Kappa
MW:	147kDa (Calculated) 200-240kDa (Observed)
Conjugate:	AbFluor 488

### Recommended Dilution Ratios

IF:	1:50-200
-----	----------

### Storage

-15°C to -25°C/1 year (Do not lower than -25°C)

### Basic Information

Clonality	Monoclonal
-----------	------------

### Immunogen Information

Specificity	Endogenous
-------------	------------

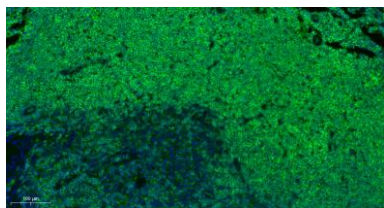
### Target Information

Gene name	PTPRC
Protein Name	Receptor-type tyrosine-protein phosphatase C (Leukocyte common antigen) (L-CA) (T200) (CD antigen CD45)

Organism	Gene ID	UniProt ID
Human	5788	P08575

Cellular Localization	Membrane
Tissue specificity	Isoform 1: Detected in thymocytes. Isoform 2: Detected in thymocytes. Isoform 3: Detected in thymocytes. Isoform 4: Not detected in thymocytes. Isoform 5: Detected in thymocytes. Isoform 6: Not detected in thymocytes. Isoform 7: Detected in thymocytes. Isoform 8: Not detected in thymocytes.

## Validation Data



Immunofluorescence analysis of human tonsil. Primary antibody was diluted at 1:100(4°C overnight).

For Research Use Only