

SOX-2 Rabbit mAb (AR1613)

Key Features

Host Species:	Rabbit
Reactivity:	Human,Mouse,Rat
Applications:	WB,IHC,IF,ELISA
Isotype:	IgG,Kappa
MW:	34kD (Calculated) 34kD (Observed)

Recommended Dilution Ratios

WB:	1:2000-1:10000
IHC:	1:100-1:500
IF:	1:200-1000
ELISA:	1:5000-20000

Storage

-15°C to -25°C/1 year (Do not lower than -25°C)

Basic Information

Clonality	Monoclonal
-----------	------------

Immunogen Information

Specificity	Endogenous
-------------	------------

Target Information

Gene name	SOX2
Protein Name	Transcription factor SOX-2

Organism	Gene ID	UniProt ID
Human	6657	P48431
Mouse	20674	P48432

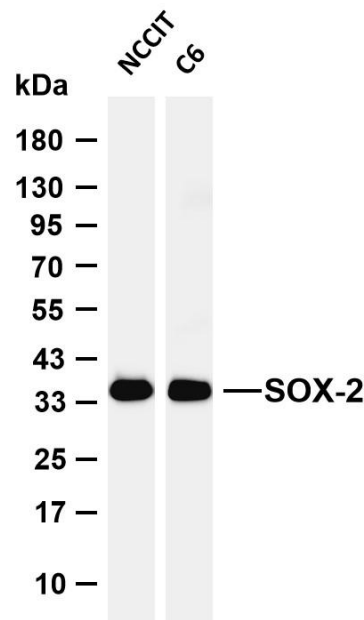
Cellular Localization

Nucleus speckle . Cytoplasm . Nucleus . Acetylation contributes to its nuclear localization and deacetylation by HDAC3 induces a cytoplasmic delocalization (By similarity). Colocalizes in the nucleus with ZNF208 isoform KRAB-O and tyrosine hydroxylase (TH) (By similarity). Colocalizes with SOX6 in speckles. Colocalizes with CAML in the nucleus (By similarity). Nuclear import is

facilitated by XPO4, a protein that usually acts as a nuclear export signal receptor (By similarity).
Fetal brain,Lung,Retina

Tissue specificity

Validation Data



Various whole cell lysates were separated by 4-20% SDS-PAGE, and the membrane was blotted with anti-SOX-2 antibody. The HRP-conjugated Goat anti-Rabbit IgG (H + L) antibody was used to detect the antibody.
Lane 1: NCCIT
Lane 2: C6
Predicted band size: 34kDa
Observed band size: 34kDa

For Research Use Only