

## p21 Rabbit mAb(AR1842)

### Key Features

Host Species:	Rabbit
Reactivity:	Mouse,Rat
Applications:	WB,IHC,IF,IP,ELISA
Isotype:	IgG,Kappa
MW:	18kDa (Calculated) 18kDa (Observed)

### Recommended Dilution Ratios

WB:	1:2000-10000
IHC:	1:500-2000
IF:	1:200-1000
IP:	1:50-200
ELISA:	1:5000-20000

### Storage

-15°C to -25°C/1 year (Do not lower than -25°C)

### Basic Information

Clonality	Monoclonal
-----------	------------

### Immunogen Information

Specificity	Endogenous
-------------	------------

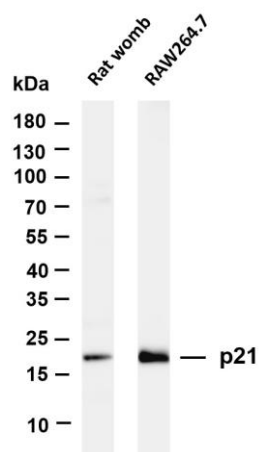
### Target Information

Gene name	CDKN1A CAP20 CDKN1 CIP1 MDA6 PIC1 SDI1 WAF1
Protein Name	Cyclin-dependent kinase inhibitor 1

Organism	Gene ID	UniProt ID
Human	1026	P38936
Mouse	12575	P39689

Cellular Localization	Nucleus
Tissue specificity	Expressed in all adult tissues, with 5-fold lower levels observed in the brain.

## Validation Data



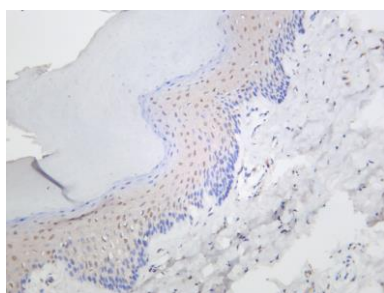
Various whole cell lysates were separated by 4-20% SDS-PAGE, and the membrane was blotted with anti-p21 antibody. The HRP-conjugated Goat anti-Rabbit IgG(H + L) antibody was used to detect the antibody.

Lane 1: Rat womb

Lane 2: RAW264.7

Predicted band size: 18kDa

Observed band size: 18kDa



Rat skin was stained with anti-p21 rabbit antibody.

For Research Use Only