

GAPDH Rabbit mAb (AR1841)

Key Features

Host Species:	Rabbit
Reactivity:	Human, Mouse, Rat
Applications:	WB, IHC, IF, ELISA
Isotype:	IgG, Kappa
MW:	38kDa (Calculated) 38kDa (Observed)

Recommended Dilution Ratios

WB:	1:10000-50000
IHC:	1:2000-5000
IF:	1:200-1000
ELISA:	1:5000-20000

Storage

-15°C to -25°C/1 year (Do not lower than -25°C)

Basic Information

Clonality	Monoclonal
-----------	------------

Immunogen Information

Specificity	Endogenous
-------------	------------

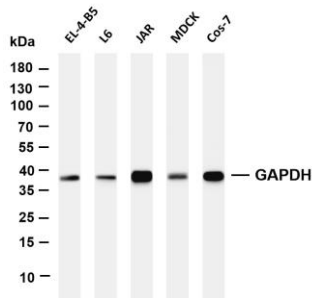
Target Information

Gene name	GAPDH
Protein Name	Glyceraldehyde-3-phosphate dehydrogenase

Organism	Gene ID	UniProt ID
Human	2597	P04406
Mouse	100042025	P16858
Rat	24383	P04797

Cellular Localization	Cytoplasm, Nucleus
Tissue specificity	Astrocytoma, Brain, Cajal-Retzius cell, Colon adenocarcinoma, Epithelium

Validation Data



Various whole cell lysates were separated by 4-20% SDS-PAGE, and the membrane was blotted with anti-GAPDH antibody. The HRP-conjugated Goat anti-Rabbit IgG(H + L) antibody was used to detect the antibody.

Lane 1: EL-4-B5

Lane 2: L6

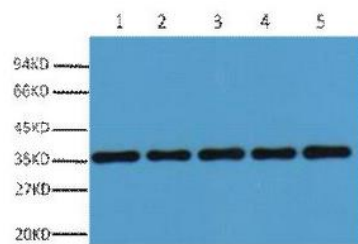
Lane 3: JAR

Lane 4: MDCK

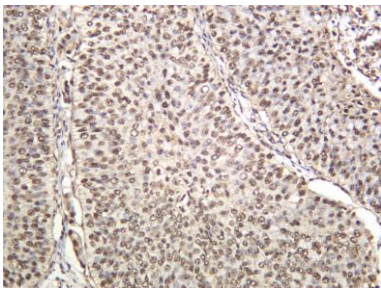
Lane 5: Cos-7

Predicted band size: 38kDa

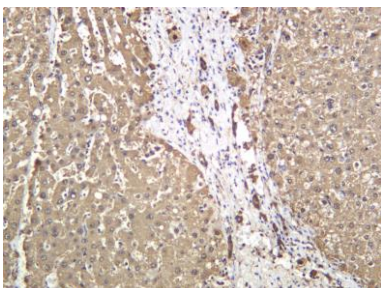
Observed band size: 38kDa



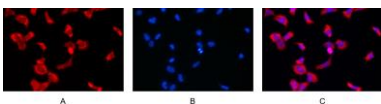
Western blot analysis of 293T (1), Rat brain (2), NIH 3T3 (3), Sheep Muscle (4), Rabbit testis (5), diluted at 1:20000. Secondary antibody was diluted at 1:20000.



Human bladder carcinoma was stained with anti-GAPDH Rabbit antibody.



Human liver was stained with anti-GAPDH Rabbit antibody.



Immunofluorescence analysis of HEK293.

Picture A: GAPDH antibody (red).

Picture B: DAPI (blue).

Picture C: Merge of A+B