

## BRAT1 Rabbit mAb(AR1839)

### Key Features

Host Species:	Rabbit
Reactivity:	Human
Applications:	WB,IF,ICC,FC,IP
Isotype:	IgG,Kappa
MW:	88kDa (Calculated) 88kDa (Observed)

### Recommended Dilution Ratios

WB:	1:1000-5000
ICC/IF	1:100-300
IP:	1:50-100
FC:	1:100-300

### Storage

-15°C to -25°C/1 year (Do not lower than -25°C)

### Basic Information

Clonality	Monoclonal
-----------	------------

### Immunogen Information

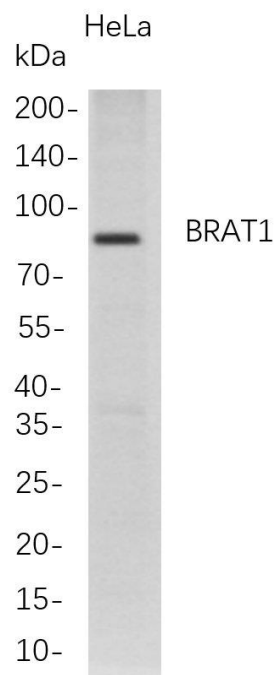
Specificity	Endogenous
-------------	------------

### Target Information

Gene name	BRAT1; BAAT1; C7orf27
Protein Name	BRCA1-associated ATM activator 1; BRCA1-associated protein required for ATM activation protein 1

	Organism	Gene ID	UniProt ID
	Human	221927	Q6PJG6
Cellular Localization	Nucleus. Cytoplasm. Note=Present at double strand breaks (DSBs)following ionizing radiation treatment. The ubiquitinated form localizes in the nucleus in a NDFIP1-dependent manner.		
Tissue specificity	Ubiquitously expressed.		

## Validation Data



Western Blot analysis of HeLa whole cell lysates were separated by 4-20% SDS-PAGE, and the membrane was blotted with anti-BRAT1 rabbit mAb. The HRP-conjugated Goat anti-Rabbit IgG(H + L) antibody was used to detect the antibody.

For Research Use Only