

## Prostein Rabbit mAb (AR1838)

### Key Features

Host Species:	Rabbit
Reactivity:	Human
Applications:	IHC
Isotype:	IgG,Kappa 59kDa (Calculated)
MW:	59kDa (Observed)

### Recommended Dilution Ratios

IHC:	1:100-300
------	-----------

### Storage

-15°C to -25°C/1 year (Do not lower than -25°C)

### Basic Information

Clonality	Monoclonal
-----------	------------

### Immunogen Information

Specificity	Endogenous
-------------	------------

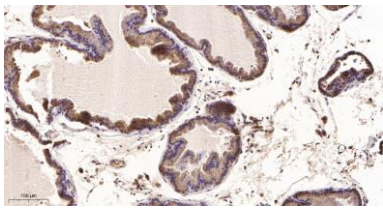
### Target Information

Gene name	SLC45A3; PCANAP6; PRST
Protein Name	Solute carrier family 45 member 3; Prostate cancer-associated protein 6;

Organism	Gene ID	UniProt ID
Human	85414	Q96JT2
Mouse	212980	Q8K0H7

Cellular Localization	Membrane; Multi-pass membrane protein.
Tissue specificity	Prostate specific. Expressed in all prostatic glandular cells. Expressed both in normal and cancerous prostates.

## Validation Data



Immunohistochemical analysis of paraffin-embedded human Prostate tissue.

1. Primary antibody was diluted at 1:200(4°C, overnight).
2. EDTA pH 9.0 was used for antibody retrieval(> 98°C,20min).
3. Secondary antibody was diluted at 1:200(room temperature, 30min).

For Research Use Only