

GCET2 Rabbit mAb (AR1837)

Key Features

Host Species:	Rabbit
Reactivity:	Human
Applications:	IHC,IF,ICC,FC
Isotype:	IgG,Kappa
MW:	21kDa (Calculated) 21kDa (Observed)

Recommended Dilution Ratios

IHC:	1:100-300
ICC/IF:	1:100-300
FC:	1:100-300

Storage

-15°C to -25°C/1 year (Do not lower than -25°C)

Basic Information

Clonality	Monoclonal
-----------	------------

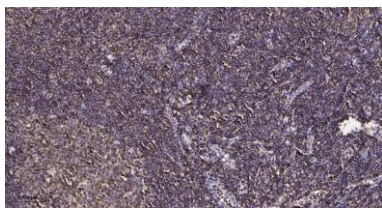
Immunogen Information

Specificity	Endogenous
-------------	------------

Target Information

Gene name	GCSAM; GAL; GCET2		
Protein Name	Germinal center-associated signaling and motility protein; Germinal center B-cell-expressed transcript 2 protein; Germinal center-associated lymphoma protein;		
	Organism	Gene ID	UniProt ID
	Human	257144	Q8N6F7
	Mouse	14525	Q6RFH4
Cellular Localization	Cytoplasm. Cell membrane. Note=It relocalizes from the cytoplasm to podosome-like structures upon cell treatment with IL6.		
Tissue specificity	Expressed in diffuse large B-cell lymphoma (DLBCL) and several germinal center (GC)-like lymphoma cell lines (at protein level). Highly expressed in normal GC lymphocytes and GC derived malignancies. Expressed in thymus and spleen.		

Validation Data



Immunohistochemical analysis of paraffin-embedded human tonsil tissue.

1. Primary Antibody was diluted at 1:200(4°C, overnight).
2. EDTA pH 9.0 was used for antibody retrieval(>98°C,20min).
3. Secondary antibody was diluted at 1:200(room temperature, 30min).

For Research Use Only