

β Catenin (Phospho Thr41/Ser45) Rabbit mAb (AR1836)

Key Features

Host Species:	Rabbit
Reactivity:	Human,Mouse,Rat
Applications:	WB,IF,IP,ELISA
Isotype:	IgG,Kappa
MW:	85kDa (Calculated) 92kDa (Observed)

Recommended Dilution Ratios

WB:	1:2000-10000
IF:	1:200-1000
IP:	1:50-200
ELISA:	1:5000-20000

Storage

-15°C to -25°C/1 year (Do not lower than -25°C)

Basic Information

Clonality	Monoclonal
-----------	------------

Immunogen Information

Specificity	Endogenous
-------------	------------

Target Information

Gene name	CTNNB1 CTNNB OK/SW-cl.35 PRO2286
Protein Name	Catenin- β ; b-catenin; Beta catenin; Beta-catenin; Cadherin associated protein; Catenin (cadherin associated protein), beta 1, 88kDa; Catenin beta 1; Catenin beta1; CATNB; CHBCAT; CTNB1_HUMAN;

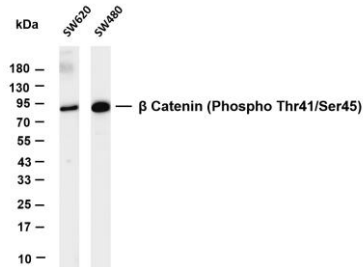
Organism	Gene ID	UniProt ID
Human	1499	P35222
Mouse	12387	Q02248
Rat	84353	Q9WU82

Cellular Localization	Membrane, Cytoplasm
-----------------------	---------------------

Tissue specificity

Expressed in several hair follicle cell types: basal and peripheral matrix cells, and cells of the outer and inner root sheaths. Expressed in colon. Present in cortical neurons (at protein level). Expressed in breast cancer tissues (at protein level) (PubMed:29367600).

Validation Data



Various whole cell lysates were separated by 4-20% SDS-PAGE, and the membrane was blotted with anti-β Catenin (Phospho Thr41/Ser45) antibody. The HRP-conjugated Goat anti-Rabbit IgG(H + L) antibody was used to detect the antibody.

Lane 1: SW620

Lane 2: SW480

Predicted band size: 85kDa

Observed band size: 92kDa

For Research Use Only