

## ULK1 Rabbit pAb (AR20095)

### Key Features

|               |                     |
|---------------|---------------------|
| Host Species: | Rabbit              |
| Reactivity:   | Human, Mouse        |
| Applications: | IHC, IF, WB, ELISA  |
| Isotype:      | IgG, Kappa          |
| MW:           | 112kDa (Calculated) |

### Recommended Dilution Ratios

|        |              |
|--------|--------------|
| IHC:   | 1:100-300    |
| WB:    | 1:500-1:2000 |
| IF:    | 1:50-1:200   |
| ELISA: | 1:40000      |

### Storage

-15°C to -25°C/1 year (Do not lower than -25°C)

### Basic Information

|           |            |
|-----------|------------|
| Clonality | Polyclonal |
|-----------|------------|

### Immunogen Information

|             |   |
|-------------|---|
| Specificity | ULK1 Polyclonal Antibody detects endogenous levels of ULK1 protein. |
|-------------|---|

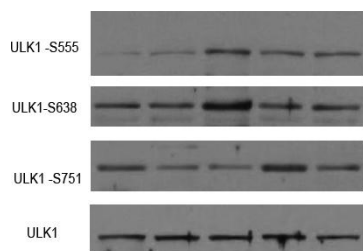
### Target Information

|              |                                      |
|--------------|--------------------------------------|
| Gene name    | ULK1                                 |
| Protein Name | Serine/threonine-protein kinase ULK1 |

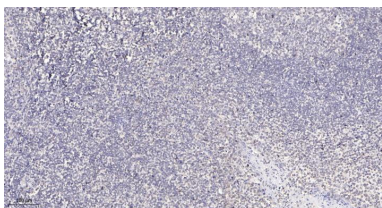
| Organism | Gene ID | UniProt ID |
|----------|---------|------------|
| Human    | 8408    | O75385     |
| Mouse    | 22241   | O70405     |

|                       |  |
|-----------------------|--|
| Cellular Localization | Cytoplasm, cytosol. Preautophagosomal structure. Under starvation conditions, is localized to punctate structures primarily representing the isolation membrane that sequesters a portion of the cytoplasm resulting in the formation of an autophagosome. |
| Tissue specificity    | Ubiquitously expressed. Detected in the following adult tissues: skeletal muscle, heart, pancreas, brain, placenta, liver, kidney, and lung.   |

## Validation Data



Western Blot analysis of various cell lysates. Primary Antibody was diluted at 1:1000. Secondary antibody was diluted at 1:10000.



Immunohistochemical analysis of paraffin-embedded human tonsil.

1. Antibody was diluted at 1:200(4°C overnight).
2. Tris-EDTA, pH9.0 was used for antigen retrieval.
3. Secondary antibody was diluted at 1:200(room temperature, 30min).

For Research Use Only