

eIF4A1 Mouse mAb (AM10024)

Key Features

Host Species:	Mouse
Reactivity:	Human,Mouse,Rat
Applications:	WB,IHC,IF
MW:	48kD (Observed)

Recommended Dilution Ratios

WB:	1:1000-3000
IHC:	1:50-300
IF:	1:100-200

Storage

-15°C to -25°C/1 year (Do not lower than -25°C)

Basic Information

Clonality	Monoclonal
-----------	------------

Immunogen Information

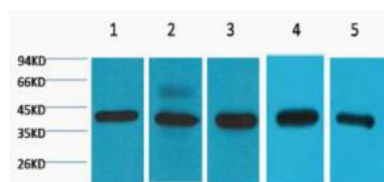
Specificity	The antibody detects endogenous eIF4A1 protein.
-------------	---

Target Information

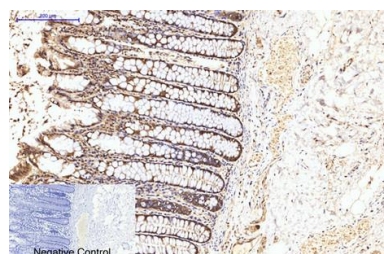
Gene name	EIF4A1
Protein Name	Eukaryotic initiation factor 4A-I

	Organism	Gene ID	UniProt ID
	Human	1973	P60842
	Mouse	13681	P60843
Cellular Localization	nucleus,cytoplasm,cytosol,membrane,eukaryotic translation initiation factor 4F complex,extracellular matrix,extracellular exosome		
Tissue specificity	Bone marrow,Lung,Spleen		

Validation Data



Western blot analysis of 1) 293T, 2) Hela, 3) HepG2, 4) Mouse Brain tissue



Immunohistochemical analysis of paraffin-embedded Human-colon-cancer tissue.

1,eIF4A1 Monoclonal Antibody was diluted at 1:200(4°C,overnight).

2, Sodium citrate pH 6.0 was used for antibody retrieval(>98°C,20min).

3,Secondary antibody was diluted at 1:200(room tempeRature, 30min).

Negative control was used by secondary antibody only.

Immunohistochemical analysis of paraffin-embedded Rat-lung tissue.

1,eIF4A1 Monoclonal Antibody was diluted at 1:200(4°C,overnight).

2, Sodium citrate pH 6.0 was used for antibody retrieval(>98°C,20min).

3,Secondary antibody was diluted at 1:200(room tempeRature, 30min).

Negative control was used by secondary antibody only.

Immunohistochemical analysis of paraffin-embedded Mouse-colon tissue.

1,eIF4A1 Monoclonal Antibody was diluted at 1:200(4°C,overnight).

2, Sodium citrate pH 6.0 was used for antibody retrieval(>98°C,20min).

3,Secondary antibody was diluted at 1:200(room tempeRature, 30min).

Negative control was used by secondary antibody only.

Immunofluorescence analysis of Mouse-spleen tissue.

1,eIF4A1 Monoclonal Antibody (red) was diluted at :200(4°C,overnight).

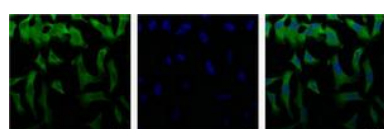
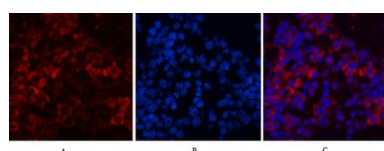
2, Cy3 labled Secondary antibody was diluted at 1:300(room temperature, 50min).

3, Picture B: DAPI(blue) 10min.

Picture A:Target.

Picture B: DAPI.

Picture C: merge of A+B



IF analysis of Hela with antibody (Left) and DAPI (Right) diluted at 1:100.

For Research Use Only