

## FBXW7 Rabbit mAb (AR1975)

### Key Features

Host Species:	Rabbit
Reactivity:	Human,Mouse,Rat
Applications:	WB,IHC,IF,ELISA
Isotype:	IgG,Kappa
MW:	80kDa (Calculated) 110kDa (Observed)

### Recommended Dilution Ratios

IHC:	1:200-1000
WB:	1:1000-1:5000
IF:	1:200-1:1000
ELISA:	1:5000-1:20000

### Storage

-15°C to -25°C/1 year (Do not lower than -25°C)

### Basic Information

Clonality	Monoclonal
-----------	------------

### Immunogen Information

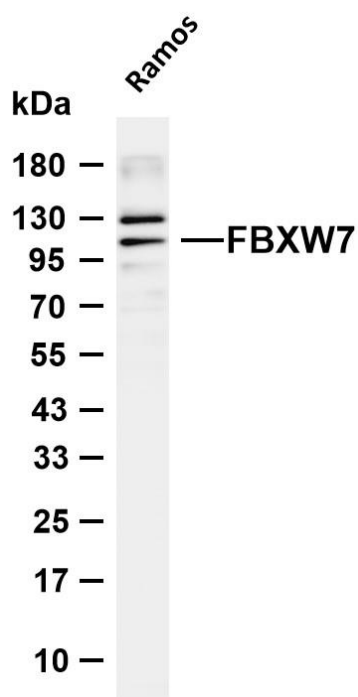
Specificity	Endogenous
-------------	------------

### Target Information

Gene name	FBXW7 FBW7 FBX30 SEL10
Protein Name	F-box/WD repeat-containing protein 7 (Archipelago homolog) (hAgo) (F-box and WD-40 domain-containing protein 7) (F-box protein FBX30) (SEL-10) (hCdc4)

	Organism	Gene ID	UniProt ID
	Human	55294	Q969H0
	Mouse	50754	Q8VBV4
Cellular Localization	[Isoform 1]: Nucleus, nucleoplasm. Chromosome. Localizes to site of double-strand breaks following phosphorylation by ATM; [Isoform 2]: Cytoplasm; [Isoform 3]: Nucleus, nucleolus.		
Tissue specificity	[Isoform 1]: Widely expressed; [Isoform 3]: Expressed in brain		

## Validation Data

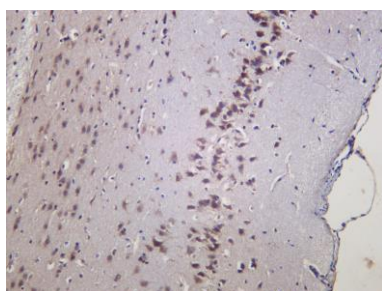


Various whole cell lysates were separated by 4-20% SDS-PAGE, and the membrane was blotted with anti-FBXW7 antibody. The HRP conjugated Goat anti-Rabbit IgG (H + L) antibody was used to detect the antibody.

Lane 1: Ramos

Predicted band size: 80kDa

Observed band size: 110kDa



Mouse brain was stained with anti-FBXW7 Rabbit antibody.

For Research Use Only