

ERK 1/2 (Phospho Thr202/Tyr204) Rabbit mAb(AR1976)

Key Features

Host Species:	Rabbit
Reactivity:	Human,Mouse,Rat
Applications:	WB, IF, ELISA
Isotype:	IgG,Kappa
MW:	44kD,42kD (Calculated) 44kD,42kD (Observed)

Recommended Dilution Ratios

WB:	1:2000-1:10000
IF:	1:200-1:1000
ELISA:	1:5000-1:20000

Storage

-15°C to -25°C/1 year (Do not lower than -25°C)

Basic Information

Clonality	Monoclonal
-----------	------------

Immunogen Information

Specificity	This antibody detects endogenous levels of p44 and p42 MAP Kinase (Erk1 and Erk2) when dually phosphorylated at Thr202 and Tyr204 of Erk1 (Thr185 and Tyr187 of Erk2), and Erk2 singly phosphorylated at Thr185, and Erk1 singly phosphorylated at Thr202
-------------	---

Target Information

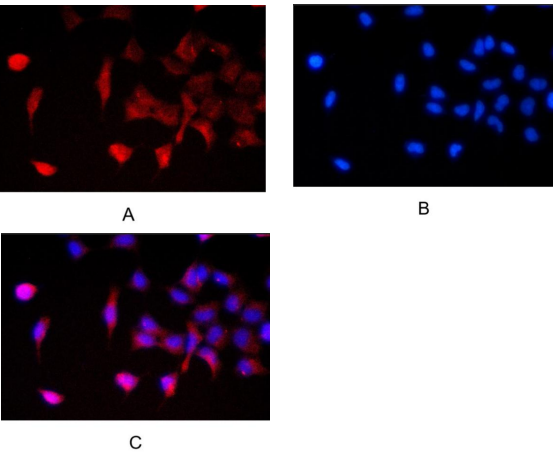
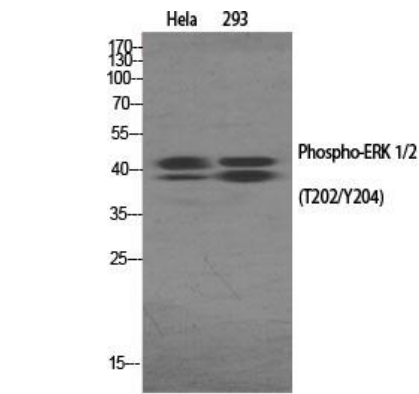
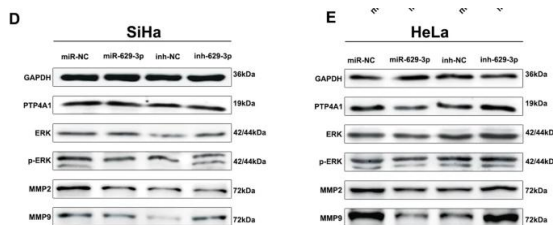
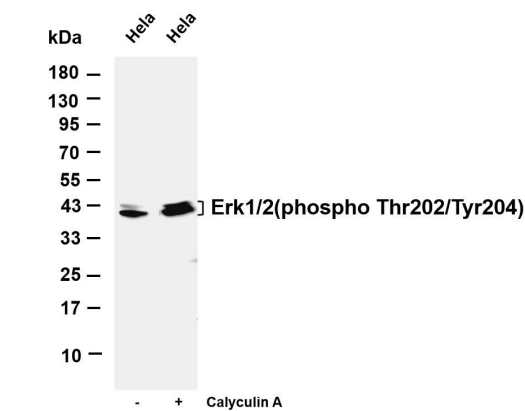
Gene name	MAPK1/MAPK3
Protein Name	Mitogen-activated protein kinase 3
Alternative name	MAPK3 ;ERK1 ;PRKM3 ;

Organism	Gene ID	UniProt ID
Human	5594; 5595;	P27361; P28482;
Mouse	26417; 26413;	
Rat	50689; 116590;	P21708; P63086;

Cellular Localization

Tissue specificity

Validation Data



For Research Use Only

Cytoplasm, Nucleus

Epithelium, Eye, Hepatoma, Human cervix, Lymph

Various whole cell lysates were separated by 4-20% SDS-PAGE, and the membrane was blotted with anti-Erk1/2(phospho Thr202/Tyr204) antibody. The HRP-conjugated Goat anti-Rabbit IgG(H + L) antibody was used to detect the antibody.

Lane 1: HeLa Lane 2: HeLa was starved of serum for 24 hours and then treated with 20% fetal bovine serum for 15 minutes, followed by Calyculin A treatment for 15 minutes

Predicted band size: 44,42kDa

Observed band size: 44,42kDa

Li, X., Ma, N., Zhang, Y. et al. Circular RNA circNRIP1 promotes migration and invasion in cervical cancer by sponging miR-629-3p and regulating the PTP4A1/ERK1/2 pathway. Cell Death Dis 11, 399 (2020)

Western Blot analysis of various cells using Phospho-ERK 1/2 (T202/Y204) Antibody

Immunofluorescence analysis of HEK293.

Picture A: ERK1 antibody (red).

Picture B: DAPI (blue).

Picture C: Merge of A+B