

DCT Rabbit pAb(AR20094)

Key Features

Host Species:	Rabbit
Reactivity:	Human, Mouse
Applications:	WB, IHC, IF, ELISA
Isotype:	IgG
MW:	59kD (Observed)

Recommended Dilution Ratios

WB:	1:500-2000
IHC	1:50-200
ELISA	1:10000-20000
IF	1:50-200

Storage

-15°C to -25°C/1 year (Do not lower than -25°C)

Basic Information

Clonality	Polyclonal
-----------	------------

Immunogen Information

Specificity	The antibody detects endogenous DCT
-------------	-------------------------------------

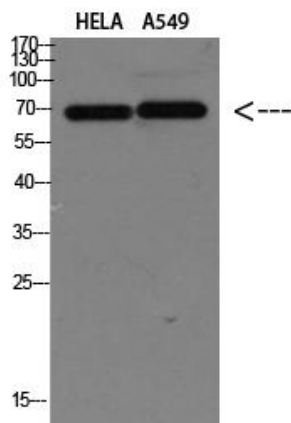
Target Information

Gene name	DCT TYRP2
Protein Name	DTC

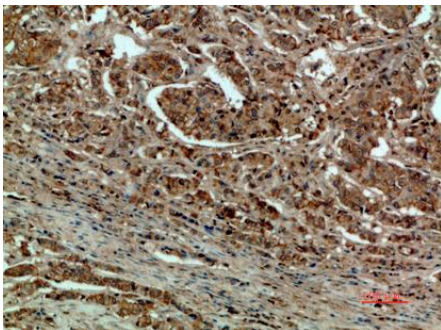
Organism	Gene ID	Human UniProt I
Human	1638	P40126
Mouse	13190	P29812

Cellular Localization	Melanosome membrane ; Single-pass type I membrane protein . Melanosome . Proper trafficking to melanosome is regulated by SGSM2, ANKRD27, RAB9A, RAB32 and RAB38.
Tissue specificity	Liver,Lymphnode melanoma metastases,Mammary gland,Melanoma

Validation Data



Western blot analysis of HELA A549 Cell Lysate, antibody was diluted at 1:1000. Secondary antibody was diluted at 1:20000



Immunohistochemical analysis of paraffin-embedded human-breast-cancer, antibody was diluted at 1:200

For Research Use Only