

CD47 Rabbit mAb (AR1611)

Key Features

Host Species:	Rabbit
Reactivity:	Human
Applications:	WB,IF,ELISA
Isotype:	IgG,Kappa
MW:	35kD (Calculated) 52kD (Observed)

Recommended Dilution Ratios

WB:	1:500-2000
IF:	1:200-1000
ELISA:	1:5000-20000

Storage

-15°C to -25°C/1 year (Do not lower than -25°C)

Basic Information

Clonality	Monoclonal
-----------	------------

Immunogen Information

Specificity	Endogenous
-------------	------------

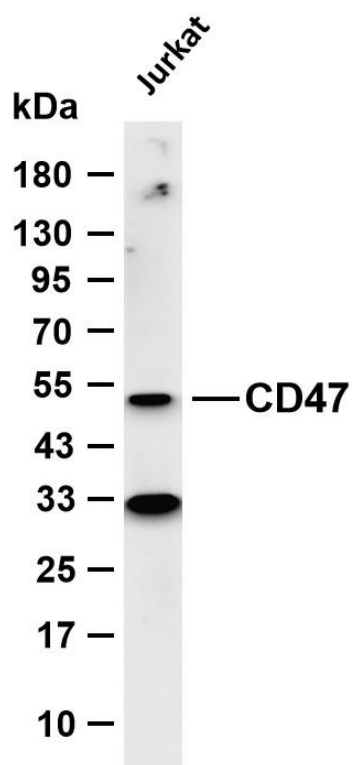
Target Information

Gene name	CD47
Protein Name	Leukocyte surface antigen CD47

Organism	Gene ID	UniProt ID
Human	961	Q08722
Mouse		Q61735

Cellular Localization	Cell membrane ; Multi-pass membrane protein .
Tissue specificity	Very broadly distributed on normal adult tissues, as well as ovarian tumors, being especially abundant in some epithelia and the brain

Validation Data



Various whole cell lysates were separated by 4-20% SDS-PAGE, and the membrane was blotted with anti-CD47 antibody. The HRP-conjugated Goat anti-Rabbit IgG (H + L) antibody was used to detect the antibody.

Lane 1: Jurkat

Predicted band size: 35kDa

Observed band size: 52kDa

For Research Use Only