

Smad2(Phospho Ser250) Rabbit mAb (AR1293)

Key Features

Host Species:	Rabbit
Reactivity:	Human,Mouse,Rat
Applications:	WB,IHC,IF,ELISA
Isotype:	IgG,Kappa
MW:	52kDa (Calculated) 58kDa (Observed)

Recommended Dilution Ratios

IHC:	1:100-500
WB:	1:1000-5000
IF:	1:200-1000
ELISA:	1:5000-20000

Storage

-15°C to -25°C/1 year (Do not lower than -25°C)

Basic Information

Clonality	Monoclonal
-----------	------------

Immunogen Information

Specificity	This antibody detects endogenous levels of Smad2 only when phosphorylated at Ser250.This antibody does not recognize phosphorylated at other sites.
-------------	---

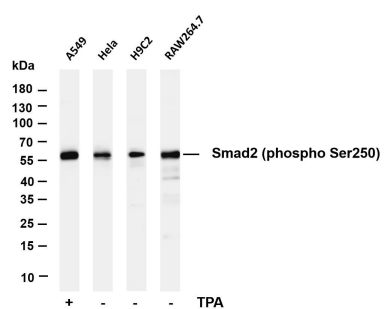
Target Information

Gene name	SMAD2
Protein Name	Mothers against decapentaplegic homolog 2

Organism	Gene ID	UniProt ID
Human	4087	Q15796
Mouse	17126	Q62432
Rat	29357	O70436

Cellular Localization	Cytoplasm,Nuclear
Tissue specificity	Expressed at high levels in skeletal muscle, endothelial cells, heart and placenta.

Validation Data



Various whole cell lysates were separated by 4-20% SDS-PAGE, and the membrane was blotted with anti-Smad2 (phospho Ser250) antibody. The HRP-conjugated Goat anti-Rabbit IgG(H + L) antibody was used to detect the antibody.

Lane 1: A549 treated with TPA for 48 hours

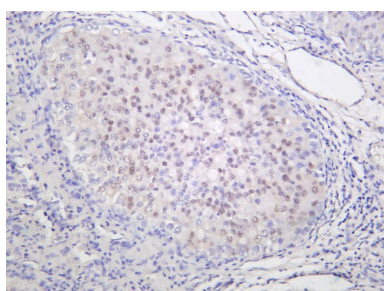
Lane 2: Hela

Lane 3: H9C2

Lane 4: RAW264.7

Predicted band size: 52kDa

Observed band size: 58kDa



Human hepatocellular carcinoma was stained with anti-Smad2 (phosphoSer250) rabbit antibody

For Research Use Only