

CREB-1 Rabbit mAb (AR1283)

Key Features

Host Species:	Rabbit
Reactivity:	Human,Mouse,Rat
Applications:	WB,IHC,IF,ELISA
Isotype:	IgG,Kappa
MW:	35kD (Calculated) 40kD (Observed)

Recommended Dilution Ratios

IHC:	1:2000-10000
WB:	1:2000-10000
IF:	1:200-1000
ELISA:	1:5000-20000

Storage

-15°C to -25°C/1 year (Do not lower than -25°C)

Basic Information

Clonality	Monoclonal
-----------	------------

Immunogen Information

Specificity	Endogenous
-------------	------------

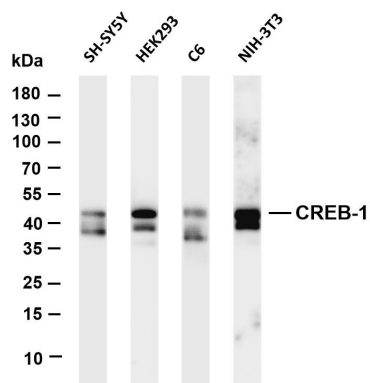
Target Information

Gene name	CREB1
Protein Name	Cyclic AMP-responsive element-binding protein 1

Organism	Gene ID	UniProt ID
Human	1385	P16220
Mouse	12912	Q01147
Rat	81646	P15337

Cellular Localization	Nucleus
Tissue specificity	Eye, Placenta, Spleen, Testis

Validation Data



Various whole cell lysates were separated by 4-20% SDS-PAGE, and the membrane was blotted with anti-CREB-1 antibody. The HRP-conjugated Goat anti-Rabbit IgG(H + L) antibody was used to detect the antibody.

Lane 1: SHSY5Y

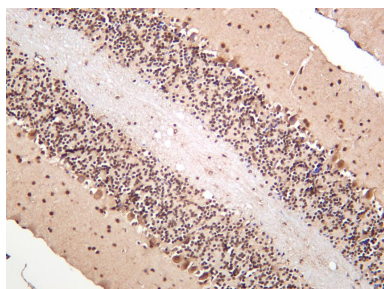
Lane 2: HEK293

Lane 3: C6

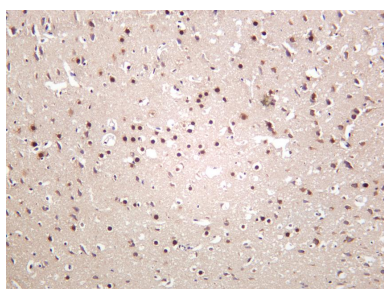
Lane 4: NIH-3T3

Predicted band size: 35kDa

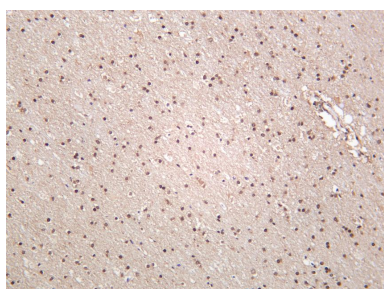
Observed band size: 43kDa



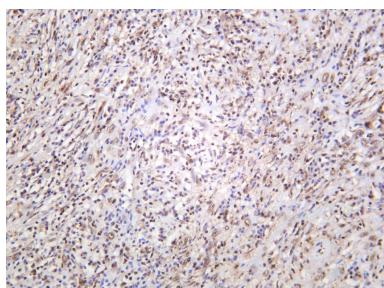
Mouse brain was stained with anti-CREB rabbit antibody



Rat brain was stained with anti-CREB rabbit antibody



Human brain was stained with anti-CREB rabbit antibody



Human thyroid carcinoma was stained with anti-CREB rabbit antibody