

# GFP/eGFP-Tag Rabbit mAb (AR1282)

## Key Features

Host Species:	Rabbit
Applications:	WB,IF,ELISA
Isotype:	IgG,Kappa
MW:	27kD (Calculated) 27kD (Observed)

## Recommended Dilution Ratios

WB:	1:5000-20000
IF:	1:200-1000
ELISA:	1:5000-20000

## Storage

-15°C to -25°C/1 year (Do not lower than -25°C)

## Basic Information

Clonality	Monoclonal
-----------	------------

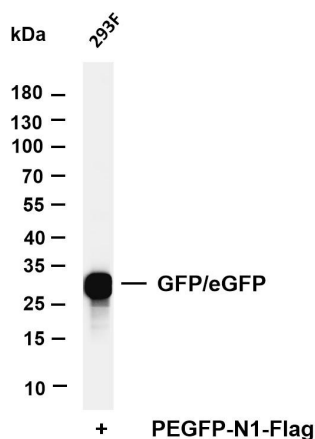
## Immunogen Information

Specificity	The antibody can detect GFP-Tag fusion proteins.
-------------	--

## Target Information

Gene name	GFP-Tag
Protein Name	GFP Tag

## Validation Data



Various whole cell lysates were separated by 4-20% SDS-PAGE, and the membrane was blotted with anti-GFP/eGFP antibody. The HRP-conjugated Goat anti-Rabbit IgG(H + L) antibody was used to detect the antibody.

Lane 1: 293F transfection by EGFP

Predicted band size: 27kDa

Observed band size: 27kDa