

Sumo 1 Rabbit mAb (AR1280)

Key Features

Host Species:	Rabbit
Reactivity:	Human, Mouse, Rat
Applications:	WB, IHC, IF, ELISA
Isotype:	IgG, Kappa
MW:	12kD (Calculated) 80kD (Observed)

Recommended Dilution Ratios

IHC:	1:2000-10000
WB:	1:2000-10000
IF:	1:200-1000
ELISA:	1:5000-20000

Storage

-15°C to -25°C/1 year (Do not lower than -25°C)

Basic Information

Clonality	Monoclonal
-----------	------------

Immunogen Information

Specificity	Endogenous
-------------	------------

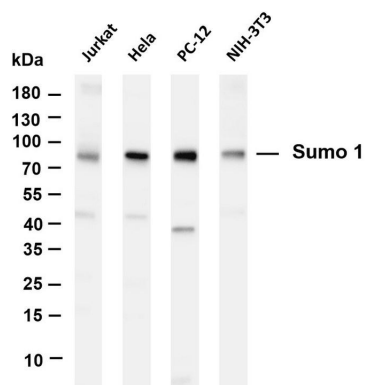
Target Information

Gene name	SUMO1
Protein Name	Small ubiquitin-related modifier 1

Organism	Gene ID	UniProt ID
Human	7341	P63165
Mouse	22218	P63166
Rat	301442	Q5I0H3

Cellular Localization	Cytoplasm, Nucleus
Tissue specificity	Brain, Colon adenocarcinoma, Epithelium, Placenta

Validation Data



Various whole cell lysates were separated by 4-20% SDS-PAGE, and the membrane was blotted with anti-Sumo 1 antibody. The HRP-conjugated Goat anti-Rabbit IgG(H + L) antibody was used to detect the antibody.

Lane 1: Jurkat

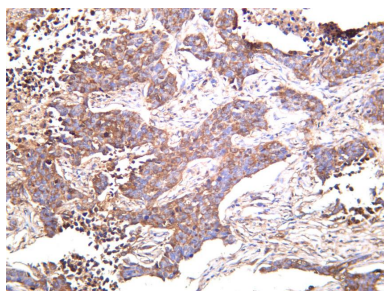
Lane 2: HeLa

Lane 3: PC-12

Lane 4: NIH-3T3

Predicted band size: 12kDa

Observed band size: 80kDa



Human lung carcinoma was stained with anti-Sumo 1 rabbit antibody

For Research Use Only