

HMGB1 Rabbit mAb (AR1269)

Key Features

Host Species:	Rabbit
Reactivity:	Human, Mouse, Rat
Applications:	WB, IHC, IF, ELISA
Isotype:	IgG, Kappa
MW:	25kD (Calculated) 25kD (Observed)

Recommended Dilution Ratios

IHC:	1:2000-10000
WB:	1:5000-10000
IF:	1:200-1000
ELISA:	1:5000-20000

Storage

-15°C to -25°C/1 year (Do not lower than -25°C)

Basic Information

Clonality	Monoclonal
-----------	------------

Immunogen Information

Specificity	Endogenous
-------------	------------

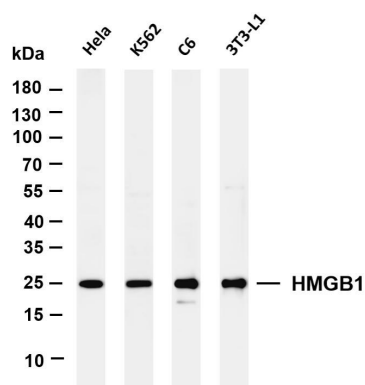
Target Information

Gene name	HMGB1 HMG1
Protein Name	High mobility group protein B1 (High mobility group protein 1) (HMG-1)

Organism	Gene ID	UniProt ID
Human	3146	P09429
Mouse	100862258	P63158
Rat	25459	P63159

Cellular Localization	Nucleus
Tissue specificity	Ubiquitous. Expressed in platelets. (PubMed:11154118)

Validation Data



Various whole cell lysates were separated by 4-20% SDS-PAGE, and the membrane was blotted with anti-HMGB1 antibody. The HRP-conjugated Goat anti-Rabbit IgG(H + L) antibody was used to detect the antibody.

Lane 1: HeLa

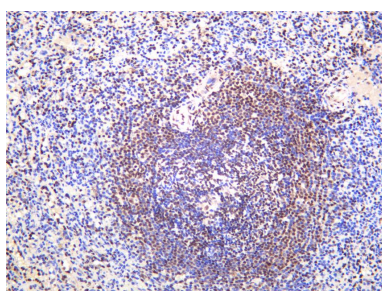
Lane 2: K562

Lane 3: C6

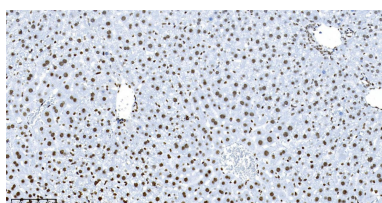
Lane 4: 3T3-L1

Predicted band size: 25kDa

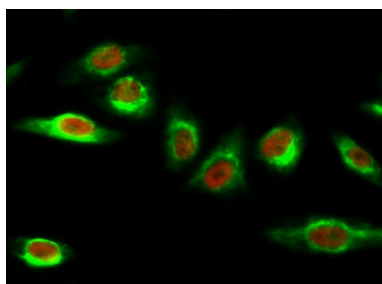
Observed band size: 25kDa



Human spleen was stained with anti-HMGB1 rabbit antibody



Mouse liver was stained with anti-HMGB1 Rabbit antibody



Immunofluorescence analysis of HeLa cell.

1. HMG-1 Antibody(red) was diluted at 1:200(4 ° overnight). Caspase 9 Monoclonal Antibody(3-20) (green) was diluted at 1:200(4° overnight).
2. Goat Anti Rabbit Alexa Fluor 594 was diluted at 1:1000(room temperature, 50min). Goat Anti Mouse Alexa Fluor 488 was diluted at 1:1000(room temperature, 50min).

For Research Use Only