

# mTOR (Phospho Ser2448) Rabbit mAb (AR1268)

## Key Features

Host Species:	Rabbit
Reactivity:	Human, Mouse, Rat
Applications:	WB, IHC, IF, ELISA
Isotype:	IgG, Kappa
MW:	289kD (Calculated) 250kD (Observed)

## Recommended Dilution Ratios

IHC:	1:500-2000
WB:	1:2000-10000
IF:	1:200-1000
ELISA:	1:5000-20000

## Storage

-15°C to -25°C/1 year (Do not lower than -25°C)

## Basic Information

Clonality	Monoclonal
-----------	------------

## Immunogen Information

Specificity	This antibody detects endogenous levels of mTOR only when phosphorylated at Ser2448. This antibody does not recognize phosphorylated at other sites.
-------------	--

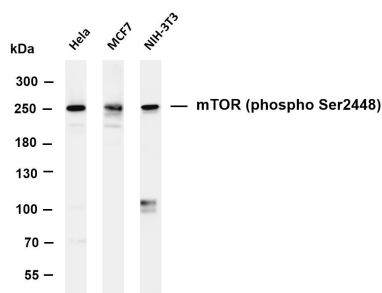
## Target Information

Gene name	MTOR
Protein Name	Serine/threonine-protein kinase mTOR

Organism	Gene ID	UniProt ID
Human	2475	P42345
Mouse	56717	Q9JLN9
Rat	56718	P42346

Cellular Localization	Cytoplasm
Tissue specificity	Expressed in numerous tissues, with highest levels in testis.

## Validation Data



Various whole cell lysates were separated by 4-8% SDS-PAGE, and the membrane was blotted with anti-mTOR (phospho Ser2448) antibody. The HRP-conjugated Goat anti-Rabbit IgG(H + L) antibody was used to detect the antibody.

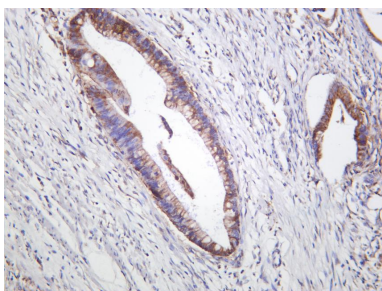
Lane 1: HeLa

Lane 2: MCF7

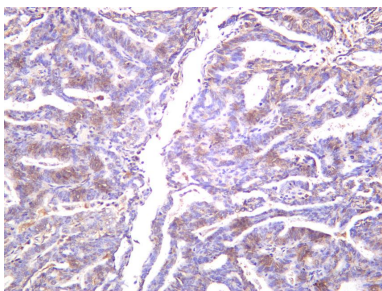
Lane 3: NIH-3T3

Predicted band size: 289kDa

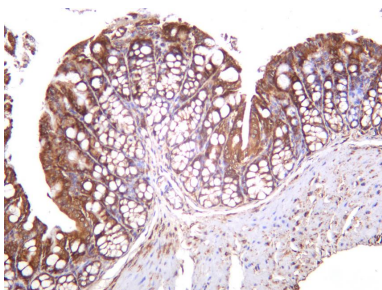
Observed band size: 250kDa



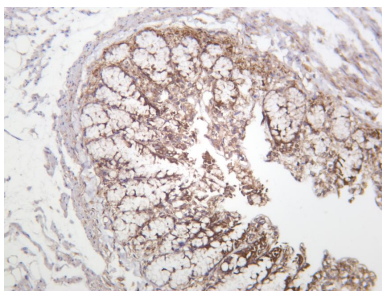
Human colon carcinoma was stained with anti-mTOR (phospho Ser2448) rabbit antibody



Human endometrium carcinoma was stained with anti-mTOR (phospho Ser2448) rabbit antibody



Mouse colon was stained with anti-mTOR (phospho Ser2448) rabbit antibody



Rat colon was stained with anti-mTOR (phospho Ser2448) rabbit antibody

For Research Use Only