

STAT3 Rabbit mAb (AR1267)

Key Features

| | |
|---------------|--------------------------------------|
| Host Species: | Rabbit |
| Reactivity: | Human, Mouse, Rat |
| Applications: | WB, IHC, IF, ELISA |
| Isotype: | IgG, Kappa |
| MW: | 88kD (Calculated) 88kD (Observed) |

Recommended Dilution Ratios

| | |
|--------|--------------|
| IHC: | 1:100-500 |
| WB: | 1:1000-5000 |
| IF: | 1:200-1000 |
| ELISA: | 1:5000-20000 |

Storage

-15°C to -25°C/1 year (Do not lower than -25°C)

Basic Information

| | |
|-----------|------------|
| Clonality | Monoclonal |
|-----------|------------|

Immunogen Information

| | |
|-------------|------------|
| Specificity | Endogenous |
|-------------|------------|

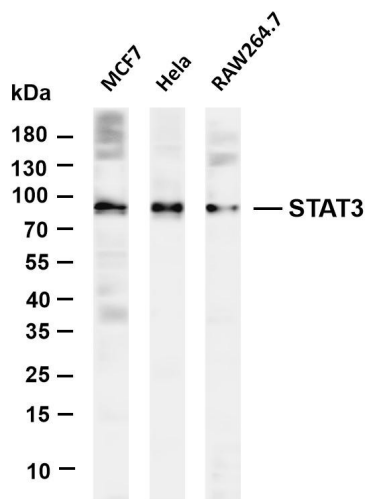
Target Information

| | |
|--------------|--|
| Gene name | STAT3 |
| Protein Name | Signal transducer and activator of transcription 3 |

| Organism | Gene ID | UniProt ID |
|----------|---------|------------|
| Human | 6774 | P40763 |
| Mouse | 20848 | P42227 |
| Rat | 25125 | P52631 |

| | |
|-----------------------|---|
| Cellular Localization | Cytoplasm, Nucleus |
| Tissue specificity | Heart, brain, placenta, lung, liver, skeletal muscle, kidney and pancreas. Expressed in naive CD4(+) T cells as well as T-helper Th17, Th1 and Th2 cells. |

Validation Data



Various whole cell lysates were separated by 4-20% SDS-PAGE, and the membrane was blotted with anti-STAT3 antibody. The HRP-conjugated Goat anti-Rabbit IgG(H + L) antibody was used to detect the antibody.

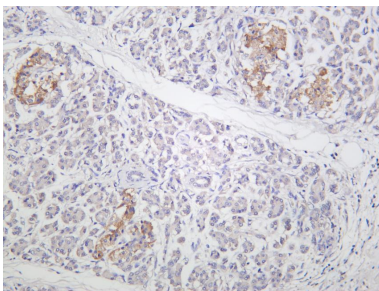
Lane 1: MCF7

Lane 2: HeLa

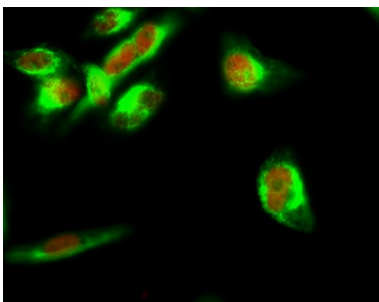
Lane 3: RAW264.7

Predicted band size: 88kDa

Observed band size: 88kDa



Human pancreas was stained with anti-STAT3 rabbit antibody



Immunofluorescence analysis of HeLa cell.

1. Stat3 Antibody(red) was diluted at 1:200(4° overnight). β -tubulin Monoclonal Antibody(M7)(green) was diluted at 1:200(4 ° overnight).
2. Goat Anti Rabbit Alexa Fluor 594 was diluted at 1:1000(room temperature, 50min). Goat Anti Mouse Alexa Fluor 488 was diluted at 1:1000(room temperature, 50min).

For Research Use Only