

Fibronectin Rabbit mAb (AR1253)

Key Features

Host Species:	Rabbit
Reactivity:	Human,Mouse,Rat
Applications:	WB,IHC,IF,ELISA
Isotype:	IgG,Kappa
MW:	272kD (Calculated) 285kD (Observed)

Recommended Dilution Ratios

IHC:	1:1000-5000
WB:	1:2000-10000
IF:	1:200-1000
ELISA:	1:5000-20000

Storage

-15°C to -25°C/1 year (Do not lower than -25°C)

Basic Information

Clonality	Monoclonal
-----------	------------

Immunogen Information

Specificity	Endogenous
-------------	------------

Target Information

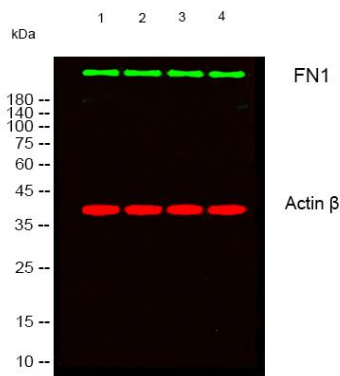
Gene name	FN1
Protein Name	Fibronectin

Organism	Gene ID	UniProt ID
Human	2335	P02751
Mouse	14268	P11276
Rat		P04937

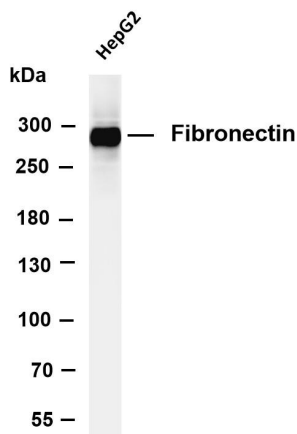
Cellular Localization	Secreted
Tissue specificity	Expressed in the inner limiting membrane and around blood vessels in the retina (at protein level) (PubMed:29777959). Plasma FN (soluble dimeric form) is secreted by hepatocytes. Cellular FN (dimeric or cross-linked multimeric forms), made by fibroblasts,

epithelial and other cell types, is deposited as fibrils in the extracellular matrix. Ugl-Y1, Ugl-Y2 and Ugl-Y3 are found in urine (PubMed:17614963)

Validation Data



Western blot analysis of lysates from 1) 3T3, 2) KB, 3) K562, 4) 293T cells, (Green) primary antibody was diluted at 1:1000, 4° overnight, secondary antibody was diluted at 1:10000, 37° 1hour. (Red) Actin β Monoclonal Antibody(5B7) antibody was diluted at 1:5000 as loading control, 4° overnight, secondary antibody was diluted at 1:10000, 37° 1hour

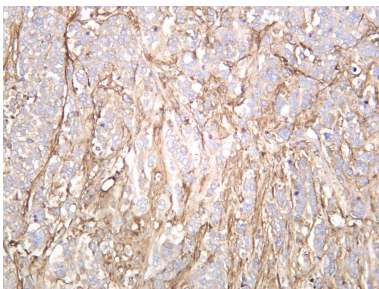


Various whole cell lysates were separated by 4-8% SDS-PAGE, and the membrane was blotted with anti-Fibronectin antibody. The HRP conjugated Goat anti-Rabbit IgG(H + L) antibody was used to detect the antibody.

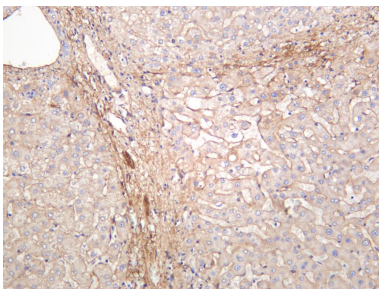
Lane 1: HepG2

Predicted band size: 272kDa

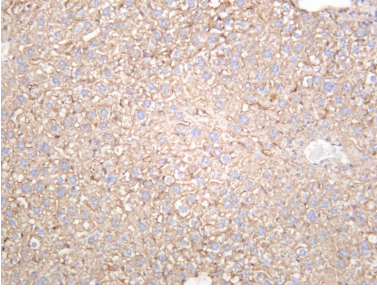
Observed band size: 285kDa



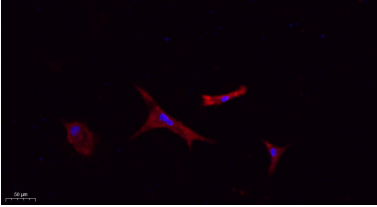
Human breast was stained with anti-Fibronectin rabbit antibody



Human liver was stained with anti-Fibronectin rabbit antibody



Mouse liver was stained with anti-Fibronectin rabbit antibody



Immunofluorescence analysis of A549.

1. primary Antibody(red) was diluted at 1:200(4°C overnight).
2. Goat Anti Rabbit IgG (H&L) - Alexa Fluor 594 Secondary antibody was diluted at 1:1000(room temperature, 50min).
3. DAPI (blue) 10min

For Research Use Only